

ATTACHMENT 1 SHIP'S PARTICULARS

Official Number:	368854
Built:	Germany 1969
Overall Length:	125.0m (410'1")
Breadth (Extreme):	19.35m (63'6")
Clearance:	3.96m (13'0")
Draft:	5.25 m
Main Engine:	Two MAN V40/54
Horsepower:	18,360 BHP (13,691 kw)
Service Speed:	22 knots
Tonnage	8806 gross 7071.47 registered
Capacities:	157 – Automobiles; 700 – Passengers and crew
Staterooms:	54
Berths:	108 (excludes 102 Berths in Tween decks)
Ship's Services:	

News-stand, Children's' Playroom, 2 Licensed Lounges, Telephones, 2 Licensed Self-serve Restaurants, Games Room, Elevator, Televised Movies, Washroom for passengers with disabilities and Staterooms with upper and lower berths (one specially designed stateroom to accommodate wheelchairs).

- **Refrigerated Truck**
Power Supply Not fitted with power cables
- *Vehicle Height Restriction* 3.96m (13'0")
- *Vehicle width restriction* 3.66m (12'0")

SPECIAL NOTES

This ship was formerly the "Stena Danica" before joining the Dogwood Fleet as the "Queen of Surrey" in 1974. From 1974 to 1975 the vessel was used on Route 2 then laid up at Deas Dock until 1979. Alterations, including the installation of additional staterooms, was done in the spring of 1980 and at this time the ship was renamed the "Queen of the North". It sailed on the Inside Passage (Route 10) in the summer and Route 10 & 11 on the winter schedule.

MASTER SYSTEM EQUIPMENT LIST (MSEL)

1000 Hull and Superstructure
2000 Propulsion
3000 Ship Service Systems
4000 Ancillary Equipment
5000 Passenger and Crew Services
7000 Instrumentation and Controls
8000 Communications Equipment
9000 Safety Equipment

Queen of the North

<i>Work Order</i>	<i>Status</i>	<i>Description</i>	<i>Op</i>	<i>Work Plan Operation Description</i>
B. COMPLETED WORK				
1044				
CENT.135049	CLOSE	D05-Drydocking, Laydays, and Services	0	General Instructions for docking and undocking.
			10	Tugs and linesmen to manoeuvre to and away from the dock
			20	Drydock space and blocks to support the vessel while in the drydock.
			30	Shore water supply for fire protection.
			40	Potable Water
			50	Electrical power
			60	Crane Services
			70	Ballast water
			80	2 safe means of access to the vessel from the dock.
			90	Compressed air, supply to the vessel at 100 psi.
			100	Dedicated telephone lines.
			110	garbage removal - unit price per skip, firm price per 4 skips
			120	Berthing space alongside Drydock
			130	Security nights and weekends for duration of drydocking
			160	Allowance for Seaspan Careen
			170	Allowance to Pre book drydock
			180	Disposal of hazardous waste.Quote firm prices for the following.
1044				
CENT.135050	CLOSE	R05-Berthing and Services	10	Berthing and Services
1044				
CENT.135244	CLOSE	R05-Shop supplies and consumables	10	Shop supplies and consumables
1044				
CENT.135245	CLOSE	R05-Crew Labour & Non-maintenance hours	15	Crew Labour
			20	Non-maintenance hours, eg. Catering, Cleaning, Supervision, and Janitorail hours required to ready vessel for service at conclusion of refit.
1044				
CENT.135247	CLOSE	R05-Fuel Oil Charges	20	Fuel Oil Charges
1044				
CENT.135248	CLOSE	R05-Hazardous waste removal and disposal	30	Hazardous waste removal and disposal
1044				
CENT.135250	CLOSE	R05-Consulting services	40	Consulting services
1044				
CENT.135251	CLOSE	R05-Fees for Submissions to TCMS & Class,	50	Fees for Submissions to Transport Canada & Class, etc
1044				
CENT.135252	CLOSE	R05-New work prior to refit.	60	New work prior to refit.
1044				
CENT.135253	CLOSE	R05-GST	70	GST
1044				
CENT.135255	CLOSE	R05-Crew Travel	10	Crew Travel
1044				
CENT.148283	CLOSE	R05-Refit Extras	10	For Deas Pacific Marine Invoice #3053, Extras and Credits
1310				
CENT.135052	CLOSE	D05-Shell	10	* Regulatory Body Survey, visual inspection and non destructive testing.
1311				
CENT.135053	CLOSE	D05-Shipside Valves	10	* Shipside Valves, Test - All sixty one (61) valves to be tested to BCFS specifications and the satisfaction of owners representative.
1313				
CENT.135054	CLOSE	D05-Sea Chests	10	* Clean and examine four (4) sea chests to satisfaction of owners representative.
1313				
CENT.144721	CLOSE	DX05-Sea Chests	10	X04 - Open up (2) additional sea chests. Clean and paint as directed, close up.

Queen of the North

<i>Work Order</i>	<i>Status</i>	<i>Description</i>	<i>Op</i>	<i>Work Plan Operation Description</i>
CENT.144721	CLOSE	DX05-Sea Chests	20	Open up cathodic treatment tank and clean as directed. Close up in good order.
1314				
CENT.135055	CLOSE	R05-Rubbing Strake	10	Rubbing Strake Port and Starboard. Repair and paint.
1316				
CENT.135056	CLOSE	D05-Shell Plating, NDT	10	* Perform Non-Destructive thickness testing on underwater hull
1320				
CENT.135051	CLOSE	D05-Hull Coatings, surface preparation.	0	* General guidance for all marine coatings in this specification.
			10	* Clean the entire hull surface from the keel to the top corner on face of rubbing strake including all appendages and recesses. Perform this work immediately after the vessel is removed from the water.
			20	The Shipyard shall quote a price for, hand scraping, any marine growth, etc., shall be removed by hand scraping. Allow for 272.5 square metres of hand scraping. (10% of surface area from keel to waterline).
			30	* The Shipyard shall quote a price for, degreasing the entire hull (approx. 2725 sq m) in accordance with SSPC-SP1 solvent cleaning standard.
			40	The Shipyard shall quote a price for, high pressure fresh water wash of the entire hull (approx. 2725 sq m).
1323				
CENT.135057	CLOSE	D05-Hull Coatings, Keel to Waterline	0	1323P, General instructions for , Coatings, Keel to Waterline
			10	The Shipyard shall quote a firm price for SSPC - SP 6, Spot Blast 15% area, 408.75 sq metres.
			20	The Shipyard shall quote a firm price for 4b. Apply the following marine coating system to the hull from keel to waterline.
			30	The Shipyard shall quote a firm price for 6. Apply the plimsoll lines, draft markers, and all other hull marking above and below the deep load line using "One Shot" sign writers paint.
			40	Hoarding, provide suitable weather protection around the work.
1326				
CENT.135058	CLOSE	D05-Coatings Waterline to top of Rubbing Strake	0	1326P, General Instructions for, Coatings, Waterline to top of Rubbing Strake
			5	1a. Prepare the existing marine coating system to the SSPC - SP 7 Brush Off Blast (sand sweep) cleaning standard on the entire area, waterline to top of rubbing strake, approximately 325 sq m, using the paint manufacture's recommended blast
			6	1b. Remove the existing marine coating system from damaged areas to the SSPC - SP 6 Spot Blast cleaning standard using the paint manufacture's recommended blast profile (anchor pattern). Shipyard to quote on 15% area, 48.73 sq m.
			10	The Shipyard shall quote a firm price for 4b. Apply the following marine coating system (coloured black) to the hull from the waterline to the top of rubbing strake. (Approx. 325 sq m).
			20	Hoarding, provide suitable weather protection.
1330				
CENT.135059	CLOSE	D03-Sternubes	10	* Take sternube wear-down readings, inspect, drain, dispose of and replenish oil. Shipyard supplied.
1332				
CENT.135060	CLOSE	D05-Strut Bearings	10	* "Examine". Check and Test the strut bearings and review maintenance records and procedures to ascertain the possible existence of errors/defects. Survey in the presence of Lloyds Representative.
1336				
CENT.135061	CLOSE	R05-Pump, LO, Sterntube Port	10	Port Sterntube Pump, Motor, and starter. Overhaul, Regulatory Body Survey
1336				
CENT.135062	CLOSE	R05-Pump, LO, Sterntube, Stbd	10	Stbd Sterntube Pump, Motor, and starter. Overhaul, Regulatory Body Survey
1338				
CENT.135063	CLOSE	R05-Heat Exchanger, Lo, Sterntube Port	10	Clean and test sterntube LO heat exchanger
1338				
CENT.135064	CLOSE	R05-Heat Exchanger, Lo, Sterntube Stbd	10	Clean and test sterntube LO heat exchanger
1340				
CENT.135065	CLOSE	R05-Vents, Tank	10	Regulatory Body Survey of all tank vents (40), clean screens.
1351				

Queen of the North

<i>Work Order</i>	<i>Status</i>	<i>Description</i>	<i>Op</i>	<i>Work Plan Operation Description</i>
CENT.135066	CLOSE	R05-#19 Port Double Bottom Fuel Tank	10	Hydrostatic test the fuel tank.
1351				
CENT.135067	CLOSE	R05-#19 Stbd Double Bottom Fuel Tank	10	Hydrostatic test the fuel tank.
1351				
CENT.138913	CLOSE	R05-Tanks, Fuel Oil, cross over valve	10	Fit a crossover valve from #19 port and starboard tank suction to aft fuel oil transfer pump in order to reduce dirty oil contamination.
1355				
CENT.135073	CLOSE	R05-#5 Port Fresh Water Deep Tank	10	Clean, survey the surface coatings, repair any damage, and perform regulatory body survey on the #5 Port Fresh Water Deep Tank.
1355				
CENT.135074	CLOSE	R05-Tank, Fresh Water, #5 Stbd Deeptank	10	Clean, survey the surface coatings, repair any damage, and perform regulatory body survey on the #5 Starboard Fresh Water Deep Tank.
1355				
CENT.135075	CLOSE	R05-Tank, Fresh Water, #16 Deeptank	10	Clean, survey the surface coatings, repair any damage, and perform regulatory body survey on the #16 Fresh Water Deep Tank.
1356				
CENT.135076	CLOSE	R05-# 1 Fore Peak Tank	10	Hydrostatic Test, and perform a regulatory body survey
1356				
CENT.135077	CLOSE	R05-#21 Starboard Double Bottom Tank	10	Hydrostatic Test - Regulatory Body Survey
1356				
CENT.135080	CLOSE	R05-#2 Forward Deep Tank	10	Hydrostatic Test - Regulatory Body Survey
1356				
CENT.135082	CLOSE	R05-#17 Centre Aft Deep Tank	10	Hydrostatic Test - Regulatory Body Survey
1356				
CENT.135084	CLOSE	R05-#9 Port Double Bottom Heeling Tank	10	Hydrostatic Test - Regulatory Body Survey
1356				
CENT.135085	CLOSE	R05-#9 Starboard Double Bottom Heeling Tank	10	Hydrostatic Test - Regulatory Body Survey
1356				
CENT.135088	CLOSE	R05-#21 Port Double Bottom Tank	10	Hydrostatic Test - Regulatory Body Survey
1356				
CENT.139840	CLOSE	D05-#18 Aft Peak Tank	0	* 1356P, General Instructions for Ballast Tank Coatings.
			10	The shipyard shall provide a firm price to apply the marine coating system as per item 4 of 1356P
			11	The shipyard shall provide a firm price for removing all oil, grease, and other contaminants to the SSPC - SP 1 Solvent Cleaning standard as per 1b of 1356P.
			12	The shipyard shall provide a firm price for removing damaged marine coatings by Part/Spot blasting to Sa2 ISO 8501-1 or SSPC SP 6 as per 1c of 1356P.
			20	Heavy scale and some wastage, requires thickness testing and repairs. Steel repair to be work arising.
1358				
CENT.135090	CLOSE	R05-Oily Waste Tanks	20	#20 double bottom dirty oil. Open, Gas free, Clean, hydrostatic test, and perform a regulatory body survey.
			30	#22 port double bottom flushing oil tank. Open, Gas free, Clean, hydrostatic test, and perform a regulatory body survey.
			40	#22 starboard double bottom flushing oil tank. Open, Gas free, Clean, hydrostatic test, and perform a regulatory body survey.
1360				
CENT.135091	CLOSE	D05-Chain Lockers	0	* 1360P, General Instructions for Compartment and Voids Coatings.
			10	* The shipyard shall provide a firm price to apply the marine coating system as per item 4 of 1360P, Total area = 600 sq ft, 300 sq ft per side.
			11	The shipyard shall provide a firm price for removing all oil, grease, and other contaminants to the SSPC - SP 1 Solvent Cleaning standard as per 1b of 1356P.
			12	The shipyard shall provide a firm price for removing damaged marine coatings by Part/Spot blasting 15% area, 90 sq ft, to Sa2 ISO 8501-1 or SSPC SP 6 as per 1c of 1360P.
			20	Overhaul hand operated pump located at bottom of the lockers.
1360				
CENT.138914	CLOSE	R05-Compartments And Voids, Hull	10	Clean and disinfect Port and Starboard bilges in AC sewage compartment then apply blue steel and primer.

Queen of the North

<i>Work Order</i>	<i>Status</i>	<i>Description</i>	<i>Op</i>	<i>Work Plan Operation Description</i>
1370				
CENT.135092	CLOSE	R05-Watertight Door System	0	General instructions for watertight door maintenance.
			10	Service Trondheim watertight doors, eleven (11) and system, service hydraulic system, controls and alarms.
1391				
CENT.135093	CLOSE	D05-Sacrificial Anodes, Hull	10	* Cathodic Hull Protection
1392				
CENT.135094	CLOSE	R05-Impressed Current System	10	Service, calibrate impressed current system. Renew wasted anodes. Twenty five (25) in total, Contractor supply.
1411				
CENT.135096	CLOSE	R05-Exterior Decks Coatings	0	General guidance for all marine coatings in this specification.
			1	* 1411P, General Instructions for Coatings, Exterior Open Decks
			5	Exterior deck plating marine coatings survey.
			10	The shipyard shall provide a firm price to remove all oil, grease, and other contaminants to the SSPC-SP1 solvent cleaning standard from all exterior decks, using International Cleaner 950. Total surface area approximately 19,800 sq ft.
			11	The shipyard shall provide a firm price to wash down with high pressure fresh water to remove all traces of salt, marine growth and loose paint from exterior decks. Total surface area approximately 19,800 sq ft.
			12	The shipyard shall provide a firm price to remove the damaged areas of marine coating system to the SSPC - SP 2 Hand Tool Cleaning and/or SP 3 Power Tool Cleaning standard, 100 sq ft of surface area.
			20	The shipyard shall quote a firm price for applying the marine coating system on deck 8 as per item 5 of 1411P.
			30	The shipyard shall quote a firm price for applying the marine coating system on deck 7 as per item 5 of 1411P.
			40	The shipyard shall quote a firm price for applying the marine coating system on deck 6 aft as per item 5 of 1411P.
			50	The shipyard shall quote a firm price for applying the marine coating system on deck 5 aft as per item 5 of 1411P.
			60	The shipyard shall quote a firm price for applying the marine coating system on Foredeck (Anchor Deck). as per item 5 of 1411P.
			70	The shipyard shall quote a firm price for applying the marine coating system on Aft Mooring Deck as per item 5 of 1411P. Approximately 1000 sq ft of surface area.
			80	The shipyard shall quote a firm price for applying the marine coating system on Wheelhouse Top (Funnel Deck) coatings, as per item 5 of 1411P. Approximately 3000 sq ft of surface area.
1412				
CENT.135097	CLOSE	R05-Car Deck Coatings	5	The shipyard shall quote a firm price to pressure wash Deck 3 & 4 cardeck plating, deckheads, bulkheads, casings, hoistable car platforms, and car ramps.
			10	The shipyard shall quote a firm price to repair the marine coatings system on the cardeck plating, Deck 3.
			20	* The shipyard shall quote a firm price to repair the marine coatings system on the cardeck plating, Deck 3.
1413				
CENT.135098	CLOSE	D05-Scuppers	10	* Sixteen (16) car deck scupper valves to be opened up for survey and overhauled.
			20	*The internal surfaces of the piping below the waterline to be coated with a full coat of Interspeed 640 @ 4 mils (100 microns)
			30	Clean out all scuppers,sewage lines and vents
1414				
CENT.135099	CLOSE	R05-Railings And Bulwarks	10	Survey, repair, paint, outer deck safety fencing.
			20	* Survey, repair, paint, outer deck railings and bulwarks.
1416				
CENT.135100	CLOSE	R05-Fairleads	10	Free up, exercise & lubricate eight (8) sets of roller fairleads, four (4) forward and four (4) aft mooring decks. Five (5) rollers in each set.
			20	Remove, overhaul , re-assembly of seized rollers.
			30	1416P, Repair the marine coating system on eight (8) sets of roller fairleads, fwd & aft mooring decks.
			40	Repair notch in solid bar, forward deck, starboard aft fairlead.

1420

Queen of the North

<i>Work Order</i>	<i>Status</i>	<i>Description</i>	<i>Op</i>	<i>Work Plan Operation Description</i>
CENT.135101	CLOSE	R05-Platform Cardecks and Ramps	10	Survey port and starboard platform cardecks and ramps.
1431				
CENT.135102	CLOSE	R05-Vehicle Embarcation Doors, Repair	10	Bow Visor, overhaul, measure clearances.
			11	Bow Visor, pressure wash, hand and/or power tool and paint as per 1414P, Railings and Bulwarks,
			20	Bow Ramp, overhaul, measure clearances.
			21	Bow Ramp, the shipyard shall quote a firm price for replacement of twenty (20) sq. ft. of steel on bow ramp and hull sealing surfaces.
			22	Bow Ramp port and starboard lower sides near hinged portions. NDT thickness testing. The shipyard shall quote for twenty (20) shots.
			23	Bow Ramp, pressure wash, hand and/or power tool and paint as per 1414P, Railings and Bulwarks,
			30	Inner Bow Doors, overhaul, measure clearances.
			31	Inner Bow Doors, pressure wash, hand and/or power tool and paint as per 1414P, Railings and Bulwarks.
			40	Stern Doors, overhaul, measure clearances.
			41	Stern Doors, pressure wash, hand and/or power tool and paint as per 1414P, Railings and Bulwarks.
1431				
CENT.135103	CLOSE	R05-Vehicle Embarcation Doors, Regulatory Survey	10	Regulatory body survey of bow visor.
			20	Regulatory body survey of inner bow doors.
			30	Regulatory body survey of stern doors
			40	Regulatory body survey of side doors, welded shut.
1440				
CENT.135104	CLOSE	R05-Hatches And Deck Openings, Superstructure	10	Repair the following quick closing & bolted hatch seals.
			11	The shipyard shall quote a firm price for renewal of single steps at two (2) stern hatches.
1451				
CENT.135105	CLOSE	R05-Weathertight Doors	10	Service and repair twenty two (22) weathertight doors
1452				
CENT.135106	CLOSE	R05-Fire Doors	10	Service all forty five (45) class A fire doors.
			20	Renew # 5-7 fire door,
1453				
CENT.135107	CLOSE	R05-Cardeck Watertight Doors (Macgregor)	10	Survey and repair cardeck watertight doors (Macgregor flood doors) (4), renew all damaged hydraulic hoses.
			20	Examine programable logic control system.
1454				
CENT.138957	CLOSE	R05-Doors (General)	10	Gift shop, Replace pocket door and surrounding ACM bulkhead and install folding door and new bulkhead.
			20	Cabins P-17 and 35. Remove existing main door and frame and replace with a wider door to permit access by walkers and wheelchairs. To accommodate increased travel by physically challenged. As discussed with Capt. Dahlgren.
1460				
CENT.135108	CLOSE	R05-Interior Superstructure Coatings	0	* 1461P, General Instructions for Interior Superstructure coatings
			10	* Perform a marine coatings survey on the interior of the superstructure.
			20	The shipyard shall quote a firm price to repair the marine coatings system, Deck 2 and 5 crews mess, officers mess, and lounge, as per 1461P General instructions for interior superstructure coatings.
			30	The shipyard shall quote a firm price to repair the marine coatings system on Deck 5, fire doors, windows, posts, bulkheads, railings as per 1461P General instructions for interior superstructure coatings.
			40	The shipyard shall quote a firm price to repair the marine coatings system on Deck 6 fire doors, windows, posts, bulkheads, washrooms, railings as per 1461P General instructions for interior superstructure coatings.
			50	* All showers need repainting. Secure pipes to bulkhead for showers where loose.
1460				
CENT.138916	CLOSE	R05-Interior Superstructure, Miscellaneous	10	Install a washer and dryer tween deck fwd
			20	Fit new frames for fan room filters
			40	Deck 3, Aft Mens shower room. Stall door needs replacing.

Queen of the North

<i>Work Order</i>	<i>Status</i>	<i>Description</i>	<i>Op</i>	<i>Work Plan Operation Description</i>
CENT.138916	CLOSE	R05-Interior Superstructure, Miscellaneous	50	Deck 5, Replace or repair counters in washrooms where stained (women's fwd. & men's aft).
			60	Deck 5, Convert 2 stalls in each of main women's and men's washrooms to permit pay shower installation.
			70	Deck 5, Remove drinking fountains in women's main washroom, women's fwd and men's deck 6
			80	Deck 5, Purser's office: Replace sliding cupboard doors with proper opening doors. Existing worn out and fall off tracks.
			90	Deck 5, Install top to layout plan of vessel to prevent articles and junk falling behind
			100	Bar, Repair top of security screen and secure to deckhead.
			110	Crew mess, Remove vinyl bench and long table at after end. Replace with coat rack on bulkhead for crew coats (now housed in the kiosk area off the alley) . Install shelf/cupboard below for storage.
			120	Deck 6, Washrooms: Men's forward needs water control panel replaced. Counter in washroom needs repair or replacement.
			130	Deck 6, Powdercoat some more tables from POW Lounge, cafeteria and midship lounge as last year.
			140	Deck 6, Install plate to cover glass door base, port side aft.
			150	Deck 7, Chief Steward's cabin: replace bunk with proper one and existing settee with a smaller one, similar covering to chief engineer's cabin. Install cupboard in new space.

1462

CENT.135109	CLOSE	R05-Interior Decks	10	Annual survey and repair of floor coverings
			20	Forward fan room deck plate is thinned down and requires renewal. Ships crew to check.
			30	Bar, Repair tiles and replace missing at entrance to storeroom
			40	Galley Alley, Replace door to freezer and remove deck below and re tile. Something is heaving under tiles, which has twisted the door, causing ice build up at door way. Hinges are worn out as well and cannot be adjusted.
			50	Galley Alley, Repair under tiles at entrance to smoking room, old Bella Bella door.
			60	Cafeteria, Repair baseboard trim.
			70	Deck 6, Repair lump under tile in alley, starboard side in cabin area.

1466

CENT.135110	CLOSE	R05-Paint Shipline and Exterior Superstructure	0	* 1466P, General instructions for painting Shipline and Exterior Superstructure
			10	Perform a marine coatings survey on the exterior of the superstructure, all vertical faces of ship from rubbing strake to top of wheelhouse, including shipline logos, name and registry.
			15	The shipyard shall quote a firm price for removing all oil, grease, and other contaminants from all vertical surfaces of the following decks to the SSPC - SP 1 Solvent Cleaning standard using International Cleaner 950.
			20	The shipyard shall quote a firm price to remove all salt and loose marine coatings from the areas listed below by high pressure fresh water wash using a 3,000 psi nozzle held 12" from the surface.
			30	The shipyard shall quote a firm price for applying the marine coating system on the shipline as per item 4a or 4b (in areas accessible to passengers) of 1466P, shipline and facings.
			35	The shipyard shall quote a firm price for repairing the marine coating system in anchor pockets with boot top paint.
			40	The shipyard shall quote a firm price for applying the marine coating system on the vertical faces of forward anchor deck as per item 4a or 4b (in areas accessible to passengers) of 1466P, shipline and facings.
			50	The shipyard shall quote a firm price for applying the marine coating system on the vertical faces of aft mooring deck.as per item 4a or 4b (in areas accessible to passengers) of 1466P, shipline and facings.
			60	The shipyard shall quote a firm price for applying the marine coating system on the vertical faces of Deck 5.as per item 4a or 4b (in areas accessible to passengers) of 1466P, shipline and facings.
			70	The shipyard shall quote a firm price for applying the marine coating system on the vertical faces of Deck 6.as per item 4a or 4b (in areas accessible to passengers) of 1466P, shipline and facings.
80	The shipyard shall quote a firm price for applying the marine coating system on the vertical faces of Deck 7.as per item 4a or 4b (in areas accessible to passengers) of 1466P, shipline and facings.			

Queen of the North

<i>Work Order</i>	<i>Status</i>	<i>Description</i>	<i>Op</i>	<i>Work Plan Operation Description</i>
CENT.135110	CLOSE	R05-Paint Shipside and Exterior Superstructure	90	The shipyard shall quote a firm price for applying the marine coating system on the vertical faces of Deck 8, as per item 4a or 4b (in areas accessible to passengers) of 1466P, shipside and facings.
1467				
CENT.135111	CLOSE	R05-Survey Windows	10	Survey all windows and repair all damaged seals.
			20	Escape windows fwd. lounge and buffet. (4) Re-seal and replace metal casing and sills.
			30	Service wheelhouse wipers
			40	Buffet, Replace window tinting on 5 windows
1469				
CENT.135112	CLOSE	R05-Stairs and Ladders	0	* 1469P, General instructions for cleaning and painting of the vessels exterior stairs and ladders.
			10	Survey coatings on all exterior stairs and ladders.
			20	Repair and paint the items indicated in the survey of stairs and ladders as per 1469P general instructions.
1471				
CENT.135113	CLOSE	D05-Mast	0	1471P, General instructions for painting the mast.
			5	The shipyard shall quote a firm price for removing all oil, grease, and other contaminants to the SSPC - SP 1 Solvent Cleaning standard.
			6	The shipyard shall quote a firm price for removing all salt and loose marine coatings using a 3,000 psi water wash with the nozzle held 12" from the surface.
			7	* Remove the existing marine coating system to the SSPC - SP 2 Hand Tool Cleaning and/or SP 3 Power Tool Cleaning standard, the shipyard shall quote a firm price for 50 sq ft.
			10	The shipyard shall quote a firm price for applying the marine coating system as per 4a of 1471P.
			20	Provide suitable local hoarding around the work in the event inclement weather conditions.
1472				
CENT.135114	CLOSE	D05-Funnel	0	1472P, General instructions for painting the funnels.
			5	The shipyard shall quote a firm price for removing all oil, grease, and other contaminants to the SSPC-SP1 solvent cleaning standard with International Cleaner 950.
			6	The shipyard shall quote a firm price for removing all salt and loose marine coatings using a 3000lbs/inch ² fresh water pressure wash with the nozzle held 12" from the surface.
			7	* Remove the existing marine coating system to the SSPC - SP 2 Hand Tool Cleaning and/or SP 3 Power Tool Cleaning standard, the shipyard shall quote a firm price for 100 sq ft.
			10	The shipyard shall quote a firm price for applying the following marine coating system (coloured BCFS Blue)
			20	The shipyard shall quote a firm price to crop, renew and recoat vent louvre, lower aft funnel.
1710				
CENT.135115	CLOSE	R05-Annual Survey of Furnishings	10	Survey, Clean, and Repair, the seating and tables in the following compartments:
2110				
CENT.138915	CLOSE	R05-Engines, Main	10	SME air start vv's checked and found #1,3 ,5,7 leaking-to be renewed
			20	ME LO auto clean filters remove and inspect
			30	Renew all BSP plugs in ME charge air coolers SW side
			40	Rebuild or renew fuel limiting pistons for ME's
			50	SME LO cooler leak at bottom base to shell joint requires renewal of gaskets
			60	SME turning gear requires overhaul
			70	SME shaft rpm pickup flywheel end bracket needs to be re-inforced
			80	SME A8 pilot vv requires frequent change drain valve to be provided in pilot air line
			90	ME (P&S) crankcase doors leaking , joints to be renewed renewed
			100	PME port A5 air intake pipe from cyl head to manifold has 3 broken bolts and leaking air and requires repair
			110	AE #2 exh gas pyrometer selector switch requires replacement
			120	Inspect and renew SME governor drive gears and intermediate gears
			130	ME FO flowmeter strainers squashed and requires renewal

Queen of the North

<i>Work Order</i>	<i>Status</i>	<i>Description</i>	<i>Op</i>	<i>Work Plan Operation Description</i>
CENT.138915	CLOSE	R05-Engines, Main	140	Section of SW outlet pipe from SME fwd air cooler requires renewal(above Fwd JCW pump)
			150	P&S ME fwd air coolers -cracks in after cooler outlet transition pieces to trunking
			160	Manufacture new idler gear for Starboard main engine.
2115				
CENT.135116	CLOSE	R05-Port Main Engine Governor	10	Main Engine Governor. Service
2115				
CENT.135117	CLOSE	R05-Stbd Main Engine Governor	10	Main Engine Governor. Service
2130				
CENT.135122	CLOSE	R05-Intake and Exhaust System	10	Survey and repair all main engine exhaust bellows and lagging.
2150				
CENT.135123	CLOSE	R05-Remote Control, Me	10	Regulatory Body Survey of control room and bridge stations
2161				
CENT.135124	CLOSE	R05-Pump, Lo, lb, Me Stbd	10	Overhaul and regulatory body survey of the starboard main engine inboard lube oil pump, motor, starter, and breaker.
2161				
CENT.135125	CLOSE	R05-Pump, Lo, Ob, Me Stbd	10	Overhaul and regulatory body survey of the starboard main engine outboard lube oil pump, motor, starter, and breaker.
2161				
CENT.135126	CLOSE	R05-Pump, Rocker Lo, Me Fwd	10	Overhaul and regulatory body survey of the port main engine outer lube oil pump, motor, starter, and breaker.
2161				
CENT.135127	CLOSE	R05-Pump, Rocker Lo, Me Aft	10	Overhaul and regulatory body survey of the aft rocker arm lube oil pump, motor, starter, and breaker.
2162				
CENT.135128	CLOSE	R05-Pump, Jw, Me Aft	10	Overhaul and regulatory body survey of the main aft jacket water cooling pump motor, starter, and breaker.
2163				
CENT.135129	CLOSE	R05-Pump, Fo Booster, Me Aft	10	Overhaul and regulatory body survey of the aft fuel oil booster pump motor, starter, and breaker.
2164				
CENT.135130	CLOSE	R05-Pump, Sw, Me Aft	10	Overhaul and regulatory body survey of the main aft saltwater cooling pump, motor, starter, and breaker.
2181				
CENT.135131	CLOSE	R05-Heat Exchanger, Lo, Me Fwd	10	Overhaul and regulatory body survey of main engine heat exchanger.
2182				
CENT.135138	CLOSE	R05-Heat Exchanger, Jw, Me Fwd	10	Overhaul and regulatory body survey of main engine heat exchanger.
2182				
CENT.135139	CLOSE	R05-Heat Exchanger, Jw, Me Aft	10	Clean cooler plate pack of the main engine heat exchanger.
2190				
CENT.135143	CLOSE	R05-Engine Mounts, Me	10	Examine and repair the port main engine chocks and hold down bolts.
			20	Examine and repair the starboard main engine chocks and hold down bolts.
2220				
CENT.135144	CLOSE	D05-Port Shafting	10	Weardown measurements to be taken
			20	The shipyard shall quote a firm price for clock gauging of the taishaft should the propeller be found damaged on inspection.
			40	Port inboard and outboard Waukesha simplex type shaft seals to be opened up for inspection,
2220				
CENT.135145	CLOSE	D05-Starboard Shafting	10	Weardown measurements to be taken
			20	The shipyard shall quote a firm price for clock gauging of the taishaft should the propeller be found damaged on inspection.
			40	Starboard inboard and outboard Waukesha simplex type shaft seals to be opened up for inspection.
2270				
CENT.138918	CLOSE	R05-Piping and Valves, Gearbox and Shafting	10	Both (P&S) shaft bearing SW cooling system piping needs to be flushed out
2320				

Queen of the North

<i>Work Order</i>	<i>Status</i>	<i>Description</i>	<i>Op</i>	<i>Work Plan Operation Description</i>
CENT.135146	CLOSE	D05-Propeller, Cp, Port	2	* The Shipyard shall quote a firm price for the welding and subsequent removal of lugs for lifting of rudders and propellers. On removal of lugs the shell plate to be ground and painted as part of the hull.
			3	* The Shipyard shall quote a firm price for removal, shipment and disposal of the oil contents of the CPP system for the port and starboard sides under the direction of KaMeWa representative.
			20	* One (1) of port propeller blades to be removed,
2320				
CENT.135147	CLOSE	D05-Propeller, Cp, Stbd	20	One (1) of starboard propeller blades to be removed,
2322				
CENT.135148	CLOSE	D05-Oil Distribution Box, Port	10	Inspection of the port oil distribution box in situ.
2322				
CENT.135149	CLOSE	D05-Oil Distribution Box, Stbd	10	Inspection of the starboard oil distribution box in situ.
2410				
CENT.135150	CLOSE	R05-Steering Gear Electrical Maintenance	10	Examine starters, manoeuvring valves, and test steering. Make functional all electrical components of steering systems.
2410				
CENT.144746	CLOSE	D05X-Steering Gear Inspection	10	Dismantle port and stbd steering gear for inspection.
			20	Supply services of Rolls Royce Representative.
2413				
CENT.135151	CLOSE	D05-Rudder, Port	10	Rudder stock and pintle bearing clearances, and carrier bearing jumping clearances are to be measured and recorded in presence of Senior Chief Engineer.
			70	The Shipyard shall quote a firm price for repair of any surface erosion on the rudder and rudder horn.
			80	Remove inspection plates, check nuts for tightness, take pintle bearing clearances, re-attach inspection plates.
2413				
CENT.135152	CLOSE	D05-Rudder, Stbd	1	NOTE: There is an inboard oil leak on the inboard stock of starboard rudder. This has leaked since January 2004 drydocking.
			10	Rudder stock and pintle bearing clearances, and carrier bearing jumping clearances are to be measured and recorded in presence of Senior Chief Engineer.
			70	The Shipyard shall quote a firm price for repair of any surface erosion on the rudder and rudder horn. The price to be for a 50 sq. ft. area repaired with Duralloy, Duratough or Cerami Flex.
			80	Remove inspection plates, check nuts for tightness, take pintle bearing clearances, re-attach inspection plates.
2420				
CENT.135153	CLOSE	D05-KaMeWa Bow Propeller	10	The Shipyard shall quote a firm price for removal, overhaul, reinstall.
			20	Clean KaMeWa bowthruster blades and tunnel for marine growth.
			30	Visually check locking devices on blades and guards.
			40	* Gear backlash to be taken in presence of KaMeWa representative.
			50	Repair the marine coating systems on the bow propeller as per 1323P, General instructions for , Coatings, Keel to Waterline.
			60	Megger test bow propeller motor
2430				
CENT.135156	CLOSE	D05-Port Stabilizer Fin	30	Port stabiliser fin shall be extended.
			40	Port stabiliser shall be functionally tested on completion of work.
			50	The marine coating system on the port stabiliser fin and housing shall be treated as per 1323P, General instructions for , Coatings, Keel to Waterline.
2430				
CENT.135157	CLOSE	D05-Starboard Stabilizer Fin	30	Starboard stabiliser fin shall be extended.
			40	Starboard stabiliser shall be functionally tested on completion of work.
			50	Repair the marine coating system on the starboard stabiliser fin and housing as per 1323P, General instructions for , Coatings, Keel to Waterline.
2430				
CENT.135158	CLOSE	D05-Stabilizer, Visual Inspection	10	* Perform visual inspection of Port and Starboard stabilizers.
3110				

Queen of the North

<i>Work Order</i>	<i>Status</i>	<i>Description</i>	<i>Op</i>	<i>Work Plan Operation Description</i>
CENT.138919	CLOSE	R05-Generation And Storage, Electrical	10	All 3 generators to be power balanced electronically i.e power factor, load etc
3115				
CENT.135159	CLOSE	R05-Generator, Auxiliary #2 (Centre)	10	Overhaul and perform a regulatory body survey.
3118				
CENT.135160	CLOSE	R05-Uninterruptible Power Supply Service	10	Navigation & Communication UPS
			20	Gyro Compass UPS
			30	Electronic Chart Display UPS
			40	Renew 5 UPS units (budget price)
3120				
CENT.135161	CLOSE	R05-Electrical Distribution	10	Contractor to perform an infrared scan on the main electrical equipment.
			20	Megger main power breakers, switchboards, motor control centers and transformers.
			30	Main switchboard upgrades
			40	Power panel, motor control center upgrades
3130				
CENT.135162	CLOSE	R05-Lighting	10	Survey Cardeck Lighting.
			20	Survey Emergency Lighting, SIC 16 Item
			30	Survey Interior Lighting
			40	Survey Navigation Lighting, SIC 16 Item
			50	Survey Floodlights & Searchlights
			60	Survey Exterior Lighting
3150				
CENT.135163	CLOSE	R05-Engine, Auxiliary #2, Centre (Ship Service)	10	Overhaul and perform a regulatory body survey on Cat 3512 auxiliary engine. Contractor supplied materials and labour.
3150				
CENT.138920	CLOSE	R05-Damper Louvres, Emergency Generator	10	Emergency generator damper louvres are corroded and require renewal
3210				
CENT.135164	CLOSE	R05-Boiler, Port	10	Clean and service boiler.
			20	Internal/External Regulatory Body Survey
3210				
CENT.135165	CLOSE	R05-Boiler, Starboard	10	Clean and service boiler.
			20	Internal/External Regulatory Body Survey
3210				
CENT.138921	CLOSE	R05-Boilers Exhaust Systems	10	Vacuum/clean exhaust for both boilers
3230				
CENT.135166	CLOSE	R05-Chiller Plants	10	Service three refrigeration units in AC compartment.
3240				
CENT.135167	CLOSE	R05-Air Conditioners	10	Overhaul and test main condensor for AC unit
3250				
CENT.135168	CLOSE	R05-Survey Fans	10	Overhaul the Reefer exhaust fan system and replace the flex connections.
3260				
CENT.135169	CLOSE	R05-HVAC Pumps	10	Survey and service all HVAC pumps
3270				
CENT.135170	CLOSE	R05-Ventilation Trunking	10	Survey Ventilation Trunking, machinery, cardeck, galley, accommodation spaces
			20	Clean areas identified in Survey.
3280				
CENT.135171	CLOSE	R05-Accommodation Heating and Cooling Coils	10	Cleaning of accomodation heating and cooling coils only.
3290				
CENT.135172	CLOSE	R05-Space Heaters	10	Clean and service the cabin deck head heaters.
3310				
CENT.138922	CLOSE	R05-Sewage Treatment Plant	10	All sewage tanks mobrey switches to be cleaned and inspected
			20	Fit new strainers for wet well pumps
			30	Sewage minijet tanks require renewal

Queen of the North

<i>Work Order</i>	<i>Status</i>	<i>Description</i>	<i>Op</i>	<i>Work Plan Operation Description</i>
CENT.138922	CLOSE	R05-Sewage Treatment Plant	40	Sewage pump running for more than 25 secs alarm to be connected to main alarm system
3311				
CENT.135173	CLOSE	D05-Sewage Treatment Tanks	10	Clean, survey the #7 sewage media tank.
			20	Clean, survey the wet well tank.
			30	Clean, survey the tunnel lift tank.
			40	Clean, survey the workshop lift tank.
			50	Clean, survey the mini jet tanks (2).
3313				
CENT.135174	CLOSE	R05-Sterilizers	10	Overhaul and test sterilization unit
3321				
CENT.135175	CLOSE	R05-Hydrophor Buffer Tank, Sanitary Water	10	Hydrophor buffer tank, forward and aft, including safeties, survey, clean, disinfect, and paint with Interguard 264. Take thickness measurements. Capacity 400 litres.
3340				
CENT.135176	CLOSE	R05-Toilets, Urinals, Sinks And Scuppers	10	Survey and repair 121 toilets and 88 scuppers.
			20	Stainless steel sink nearest to alleyway cracked
3410				
CENT.135177	CLOSE	R05-Compressor, Air, Aft Main	10	Complete overhaul and regulatory body survey of aft main air compressor.
3420				
CENT.135178	CLOSE	R05-Receiver, Air, Emergency	10	Test, calibrate, air bottle and relief valves.
3510				
CENT.135179	CLOSE	R05-Hydraulic Module	10	Overhaul and perform a regulatory body survey on the windlass machinery hydraulic system.
			15	NDT of hydraulic piping around fwd and aft mooring winches
			20	Bow Visor, Bow ramp, Inner Bow door, Stern doors, Platform Cardecks and Ramps. Inspect and replace Hydraulic hoses.
3611				
CENT.135180	CLOSE	R05-Hydrophor Buffer Tank, Domestic Water	10	Domestic water Hydrophor buffer tank forward and aft, including safeties. Clean, paint, and regulatory body survey by Health Canada.
3616				
CENT.138923	CLOSE	R05-Pump, Domestic Hot Water Circ. Aft	10	Overhaul and survey of pump, motor, starter, and breaker.
3616				
CENT.138924	CLOSE	R05-Pump, Domestic Hot Water Circ. Forward	10	Overhaul and survey of pump, motor, starter, and breaker.
3616				
CENT.138925	CLOSE	R05-Pumps Domestic Water, Forward F.W.	10	Overhaul and survey of pump, motor, starter, and breaker.
3616				
CENT.138926	CLOSE	R05-Pumps Domestic Water, Aft. F.W.	10	Overhaul and survey of pump, motor, starter, and breaker.
3680				
CENT.135181	CLOSE	R05-Thermostat Control Valves	10	Overhaul the thermostat control valves.
4130				
CENT.135182	CLOSE	R05-Elevators	10	Annual Inspection and Certification of elevator and dumbwaiter by BC Safety Authority.
			20	Annual service of passenger elevator and dumbwaiter by Kone Inc. service representative as per contract.
4140				
CENT.135183	CLOSE	R05-Stairlift	10	Survey and make functional the stair lift
4160				
CENT.139781	CLOSE	D05-Windlass, Anchor, Stbd	10	Overhaul and perform a regulatory body survey on the starboard anchor windlass.
			20	* The shipyard shall quote a firm price for applying the marine coating system on Foredeck (Anchor Deck) under starboard anchor windlass as per 1411P. Approximately 40 sq ft. surface area.
4167				
CENT.135184	CLOSE	D05-Anchors and Chain	10	Regulatory body survey anchor and chains port and starboard.
4170				
CENT.135185	CLOSE	R05-Lines And Rigging	10	Survey and service vessel's rigging
4300				

Queen of the North

<i>Work Order</i>	<i>Status</i>	<i>Description</i>	<i>Op</i>	<i>Work Plan Operation Description</i>
CENT.138927	CLOSE	R05-General Piping Systems	10	Renew Sw strainers for sanitary pump's and genr internal assly and renew O-rings
			20	Sw piping from primary strainers to engines and back overboard to renew
			30	Discharge junction between genr 1&2 to be changed to Y instead of T
			40	Fabricate 1" connection for suc/disch pipe of LO transfer pp
4316				
CENT.135186	CLOSE	R05-Pump, Bilge, Aft	10	Overhaul and regulatory body survey of the aft bilge pump, motor, starter, and breaker.
4316				
CENT.135187	CLOSE	R05-Pump, Bilge, Emergency	10	Overhaul and regulatory body survey of the emergency bilge pump, motor, starter, and breaker.
4317				
CENT.135188	CLOSE	R05-Piping & Valves, Bilge System	10	Renew bilge and ballast lines and fittings. Scope to be determined by ships crew before refit.
4362				
CENT.135189	CLOSE	R05-Pump, Fo Transfer	10	Overhaul and regulatory body survey of the FO transfer pump, motor, starter, and breaker.
4362				
CENT.135190	CLOSE	R05-Pump, Fo Transfer (X-Hfo)	10	Overhaul and regulatory body survey of the FO (X-Hfo) transfer pump, motor, starter, and breaker.
4363				
CENT.135191	CLOSE	R05-Pump, Ballast	10	Overhaul and regulatory body survey of the ballast pump, motors, starter, and breaker.
			20	Vacuum pump for stbd Ballast pump to be o/hauled
4370				
CENT.135192	CLOSE	R05-Piping and Valves, General Piping Systems	10	Survey the valves on the piping for the domestic heating system. Renew the valves indicated by the survey
			20	For the Pleiger system, service all control valves in cabinets and all suction valves, renew all seals and cup springs.
			30	Overhaul and perform a regulatory body survey on the bilge and ballast lines and fittings. Renew all wasted pipes.
			40	Overhaul and perform a regulatory body survey on all lines and fittings excluding the bilge and ballast. Renew all wasted pipes.
			50	Renew temperature gauge of forward SW pump discharge (drydock)
			60	Overhaul Ballast Valve above ballast manifold beside ER escape door.
			70	Repair 2 SW pipes in ER, vibrating, require to be fastened by brackets
4376				
CENT.135193	CLOSE	R05-Extended Spindles	10	Survey.service all extended spindles.
4410				
CENT.135194	CLOSE	R05-Purifiers, Lo, Fwd	10	Overhaul in accordance with the manufacturers specifications from service manual insitu
			20	LO purifiers piping to be modified to ensure complete interchangeability with all 3 pfrs Centre Lo purifier heater wiring to renew
4410				
CENT.135195	CLOSE	R05-Purifiers, Lo, Aft	10	Overhaul in accordance with the manufacturers specifications from service manual insitu
4410				
CENT.135196	CLOSE	R05-Purifiers, Lo, Center	10	Overhaul in accordance with the manufacturers specifications from service manual insitu
4420				
CENT.135197	CLOSE	R05-Purifier, FO, Fwd	10	Overhaul in accordance with the manufacturers specifications from service manual insitu
4430				
CENT.135199	CLOSE	R05-Oily Water Separator	10	Exchange the oily water PPM meter. Focas 1500E
			20	Survey, clean the Huss oily waste containment tank.
4550				
CENT.135200	CLOSE	R05-Lifting Gear and Hard Points	10	Overhaul and Test Lifting Gear
			20	Load test lifting points

Queen of the North

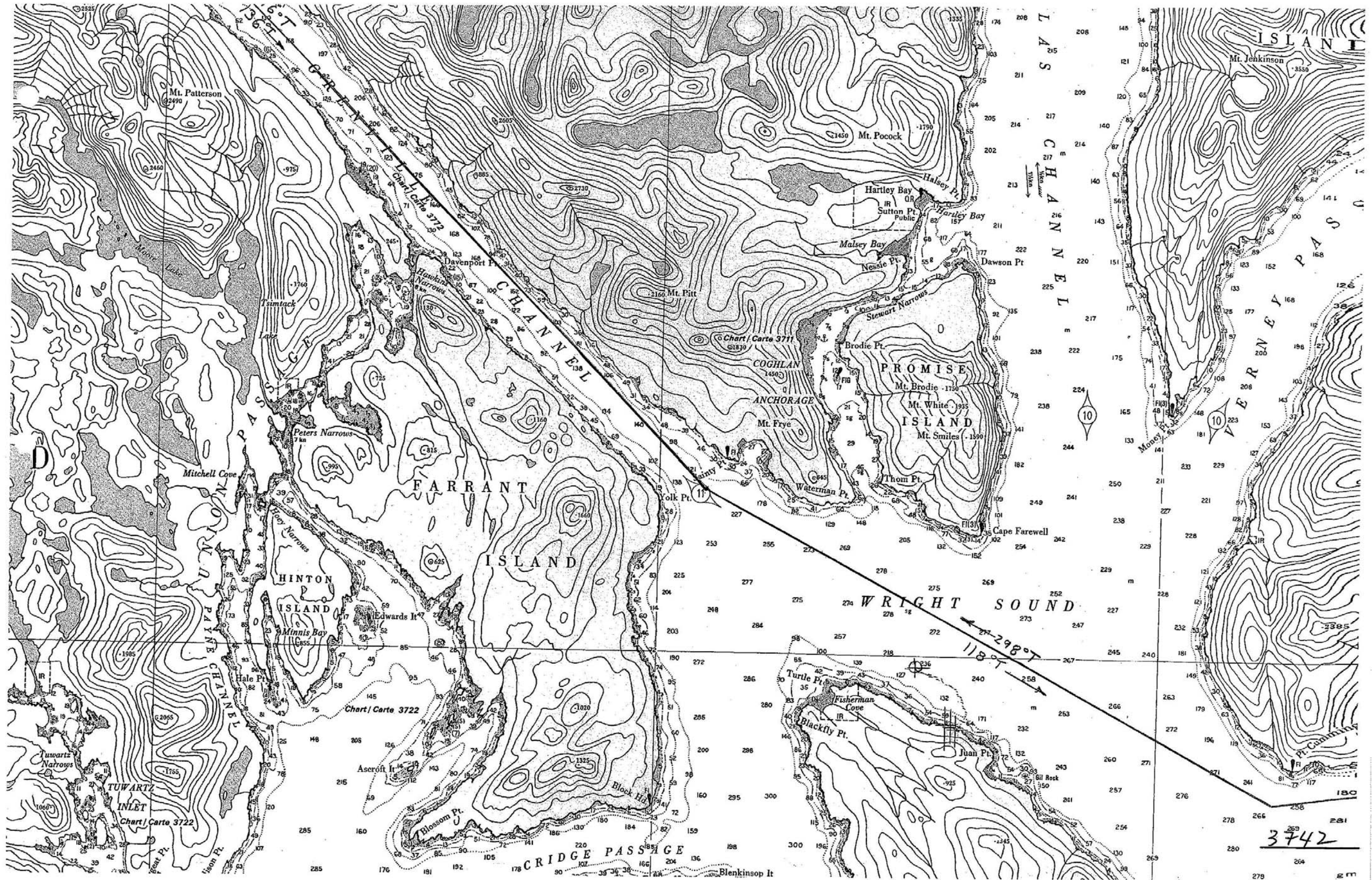
<i>Work Order</i>	<i>Status</i>	<i>Description</i>	<i>Op</i>	<i>Work Plan Operation Description</i>
CENT.135201	CLOSE	R05-Torque Wrenches and Engine Analyzer	10	Calibrate torque wrenches
			20	Calibrate engine analyzer "Premet"
5100				
CENT.135202	CLOSE	R05-Appliances, Fixed	10	Annual Survey of Fixed Appliances
			20	Survey, clean all elements and wiring in stovetops and grills for defects and repair.
			30	Buffet, Install two half wells in steam servery, per Hans Zimmermann
			40	Bar, Add booster heater for hot water to glass washer. Health Canada concern, issued CAR by ISM.
			50	Galley, Recut new steam wells in crew servery to conform to standard inserts.
			60	Galley, Soup warmers are leaking and require overhaul.
			70	Galley, Investigate replacing sink so bays are big enough to hold cup racks.
			80	Galley, Scupper by steamer is not draining and needs repair.
5200				
CENT.135203	CLOSE	R05-Appliances, Removable	10	Annual Survey of Removable Appliances
5300				
CENT.135204	CLOSE	R05-Refrigeration	10	Annual Survey of Refrigeration Equipment
5400				
CENT.135205	CLOSE	R05-Retail Equipment	10	Survey and service all retail equipment.
7100				
CENT.135206	CLOSE	R05-Navigation Equipment Survey, ISM requirement	10	Doppler log service
			20	Navigation Equipment-Electronic Charts/ECDIS-GPS-WIND Indicators-Navtext
			30	Global Positioning System Service
			40	Navigation and Communication U.P.S.
			50	Auto Pilot Service
			60	Echo Sounder Service
			70	Wind Speed and Direction Indicator
7111				
CENT.138817	CLOSE	D05-Depth Sounder	10	* Service the depth sounder
7117				
CENT.135207	CLOSE	R05-Compass, Magnetic	10	Magnetic compass to be adjusted on completion of refit.
7120				
CENT.135208	CLOSE	R05-Radar #1, Litton 340 E CAS	10	Annual radar service
7120				
CENT.135209	CLOSE	R05-Radar #2 Sperry 340 S-Band	10	Annual radar service
7120				
CENT.135210	CLOSE	R05-Radar #3, Racal Decca Bridgemaster C251/6	10	Annual radar service
7140				
CENT.135211	CLOSE	R05-Survey Gyro Compass	10	Service and regulatory body survey gyro compass and repeater.
7150				
CENT.135212	CLOSE	R05-Integrated Navigation System	10	Survey and service the integrated navigation system.
7160				
CENT.135213	CLOSE	R05-Electronic Chart Display (ECDIS)	10	Survey and service the ECDIS.
7340				
CENT.135214	CLOSE	R05-Propulsion Engine Control	10	Survey and service the propulsion control system.
			20	Service the port & starboard main engine telegraph systems.
7360				
CENT.135215	CLOSE	R05-Steering Control	10	Service and synchronize the rudder indicators and rheos.
7500				
CENT.138955	CLOSE	R05-Consoles And Remote Panels	10	Fit run and stop lights in engine control room for sanitary and fresh water pump's
8000				
CENT.135216	CLOSE	R05-Communications Survey, ISM requirement	10	Radios Company Frequency
			20	VHF Equipment
			30	Closed Circuit TV System

Queen of the North

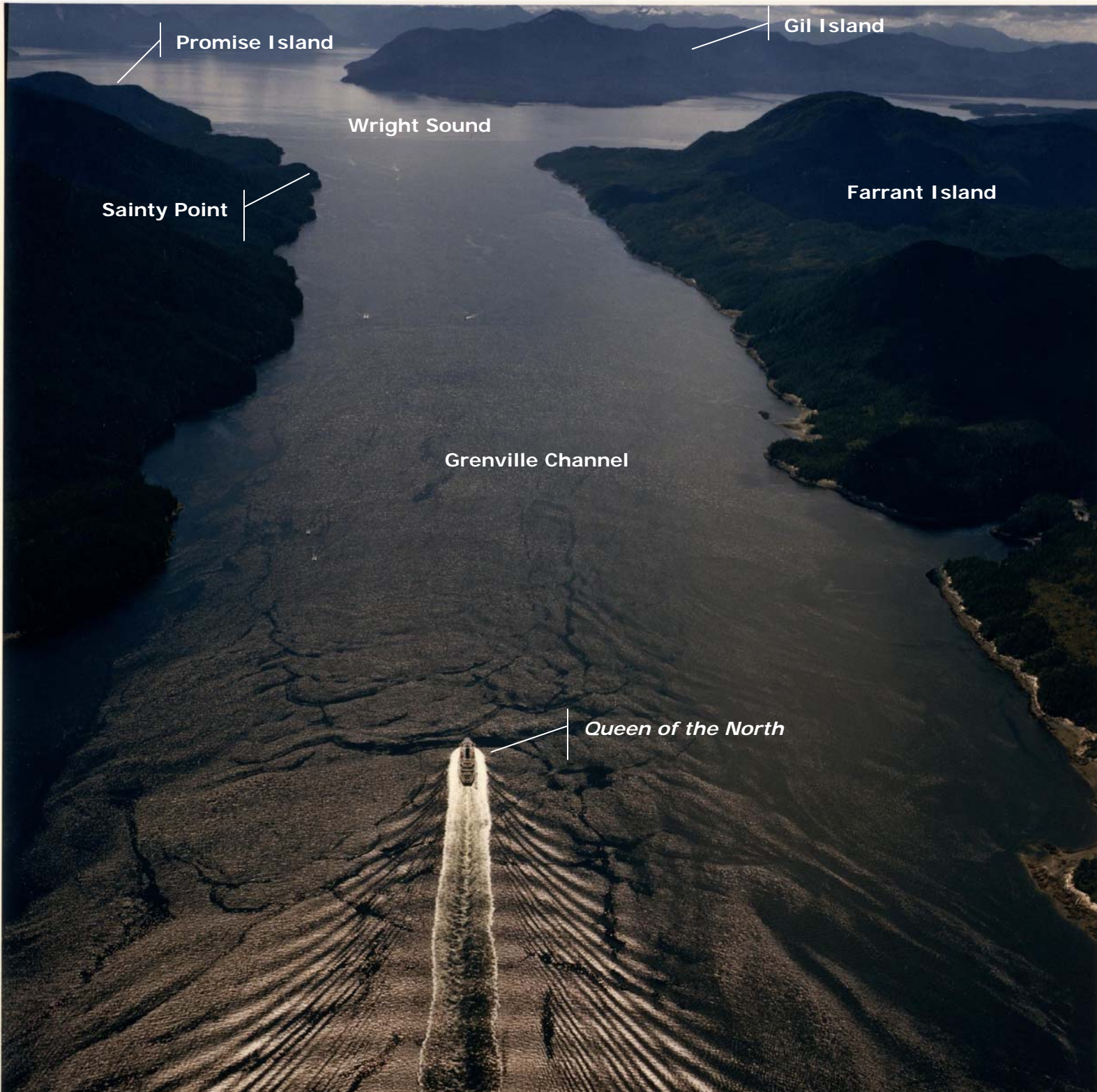
<i>Work Order</i>	<i>Status</i>	<i>Description</i>	<i>Op</i>	<i>Work Plan Operation Description</i>
CENT.135216	CLOSE	R05-Communications Survey, ISM requirement	40	Emergency Radio Batteries
			50	Public Address System
			60	Internal Radio Systems and Repeaters
			70	Service Aiphone Non Nemetz System
			80	Service Playback and Recording Equipment
			90	Service all Telephones
8120				
CENT.135217	CLOSE	R05-Telephone System (Shipboard)	10	Sound Powered Phones
			20	Aiphone
8200				
CENT.135218	CLOSE	R05-Fixed and Handheld Radios	10	Survey and service all fixed radios.
			20	Service radio repeater system.
			30	Service all shipboard handheld radios.
8300				
CENT.135219	CLOSE	D05-Sound And Horn Systems	10	Service the ships horns
8310				
CENT.135220	CLOSE	R05-General Alarm System	10	Service the general alarm system.
8320				
CENT.135221	CLOSE	R05-Public Address System	10	Service public address system
8400				
CENT.135222	CLOSE	R05-Closed Circuit Tv	10	Examine and make functional closed circuit cameras, television monitors, and recorders.
8600				
CENT.135223	CLOSE	R05-Signage	10	Survey, repair, renew, all vessel signage to make them functional.
9100				
CENT.135224	CLOSE	R05-Fire Protection Systems, SIC16	10	Test and prove functional the following equipment and systems for regulatory body certification.
			20	Operate all items in the presents of regulatory bodies for certification.
9100				
CENT.138821	CLOSE	D05-Shipside Fire Shutters	10	* Repair all thirty three (33) shipside fire shutters
			20	Regulatory body survey of shipside fire shutters.
9110				
CENT.135225	CLOSE	R05-Fire Detection & Notification System	10	Regulatory Body Survey fire panels and smoke/heat sensors. Service fire panels.
9120				
CENT.135226	CLOSE	R05-Fire Fighting Sprinkler Systems	10	Deluge system service and survey
9123				
CENT.135227	CLOSE	R05-Fire Dampers	10	Survey all ship's fire dampers
			20	Make functional all fire dampers found deficient from survey.
9126				
CENT.135228	CLOSE	R05-Pump, Fire, Emergency	10	Overhaul and regulatory body survey of the emergency fire pump, motor, starter, and breaker.
9130				
CENT.135229	CLOSE	R05-Fire Extinguishers, Fixed	10	All fixed CO2 systems bottles to be removed & weighed, service valves and hoses
			20	CO2 room door on cardeck requires a better latching arrangement to avoid unnecessary shut down of ventillation
			30	Remove blowing through valve of CO2 room as it placed in the wrong direction
9140				
CENT.135230	CLOSE	R05-Fire Extinguishers, Portable	10	All portable fire extinguisher to be weighed and serviced and copies of certificate to be forwarded to the Senior Chief Engineer.
9150				
CENT.135231	CLOSE	R05-Breathing Apparatus	10	All air breathing apparatus to be serviced by an OEM certified service company and bottles refilled.
9200				
CENT.135232	CLOSE	R05-Lifesaving Equipment	10	Service, Regulatory Body Survey of life saving equipment.
9210				

Queen of the North

<i>Work Order</i>	<i>Status</i>	<i>Description</i>	<i>Op</i>	<i>Work Plan Operation Description</i>
CENT.135233	CLOSE	R05-Rescue Boat Davits, MOB	1	Davit, Schat, MOB, Rescue Boat
			10	Perform the following work on the MOD Davit
			100	Contracted Services
9210				
CENT.135234	CLOSE	R05-Liferaft Davits, SAR	5	Work Order for 4 Schat SAR davits.
			10	Shipyard work
			100	Contracted Services
9210				
CENT.135235	CLOSE	R05-Lifeboat Davits, GRA	5	Work Order is for 2 davits.
			10	Riggers
			100	Contracted Services
9220				
CENT.135236	CLOSE	R05-Lifeboats	10	Regulatory Body Survey of Lifeboats.
			20	Lifeboat lifting hook inspection and load testing.
9230				
CENT.135237	CLOSE	R05-Liferafts	10	Overhaul and perform a regulatory body survey of liferafts.
9240				
CENT.135238	CLOSE	R05-Rescue Boats	10	Service, regulatory body survey of rescue boat and release hook.
9300				
CENT.135239	CLOSE	R05-BCFC Safety Systems	10	Survey and service the nemetz system.



ATTACHMENT 5
Grenville Channel Aerial Photograph



**ATTACHMENT 6
Wright Sound Aerial Photograph**



**ATTACHMENT 7
WATER VIEWS**

Queen of Prince Rupert in Grenville Channel
Southbound (August 23, 2006)



**ATTACHMENT 7
WATER VIEWS**

Queen of Prince Rupert in Grenville Channel
(August 23, 2006)

Sainty Point Light

LLNR 665

53° 22' 18"

129° 18' 40"

flashing white, 4 seconds, 4.6 m focal height

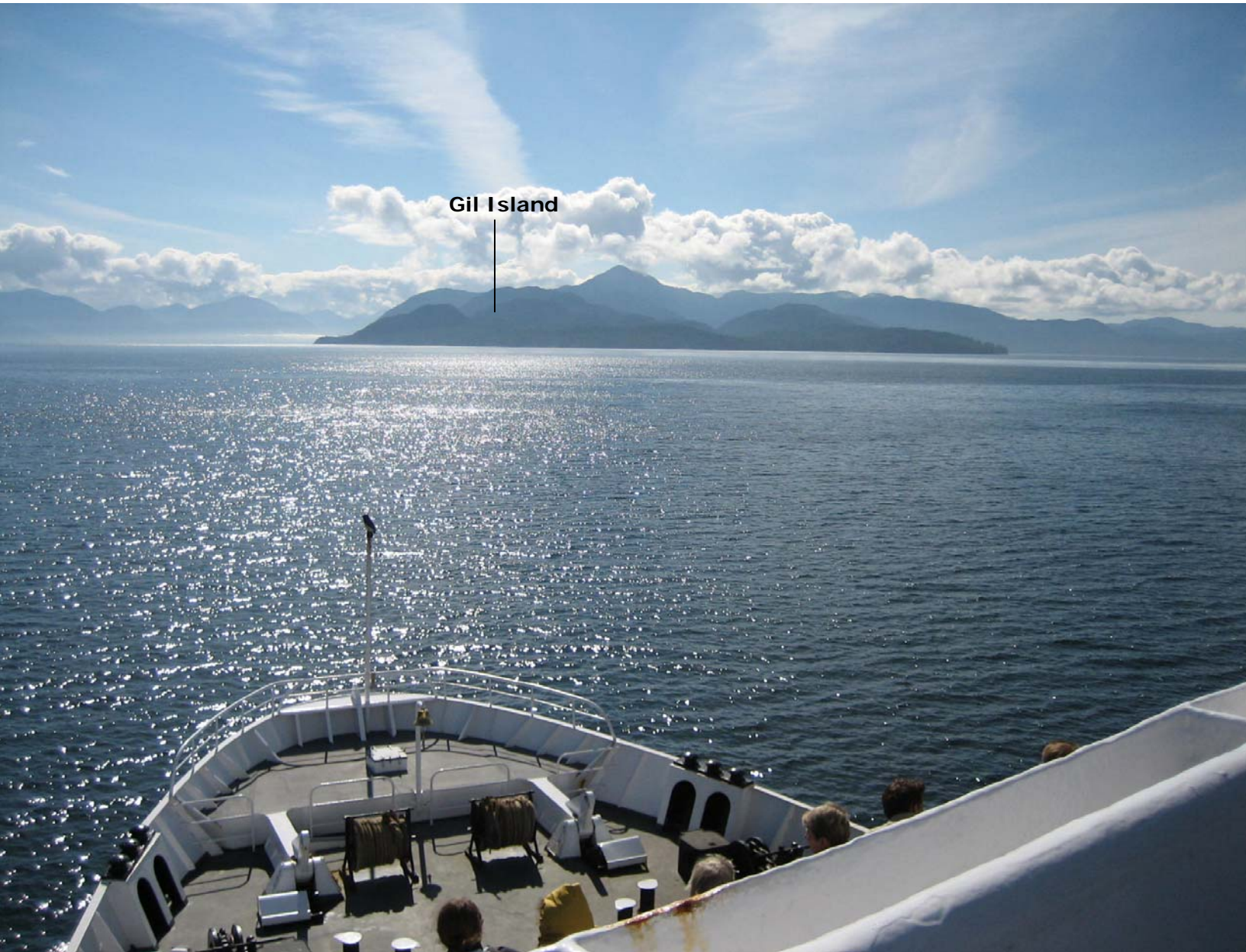
nominal range: 7 nm

white cylindrical tower



**ATTACHMENT 7
WATER VIEWS**

Queen of Prince Rupert in Grenville Channel
Southbound (August 23, 2006)



Gil Island

ROUTE #10 NORTH: PRINCE RUPERT -- BEAR COVE

TOTAL DISTANCE: 272.85

CHARTS: 3958, 3956, 3927, 3773, 3772, 3744, 3940

POSITION	COURSE(T)	BEARING/ RANGE	DISTANCE	REMARKS
Depart Prince Rupert	Various		0.35	Call VTS ch 71
Course Ahead	190		0.5	
Fairview Dock	180	0.1	0.9	
Casey Beacon	162	0.1	1.8	
Spirledge Buoy (D47)	182	307/0.25	4.5	
Holland Rock	156	296/0.25	4.9	CIP #15C ch 71
Genn Island Light	153	066/0.15	3.0	CIP #14B ch 71
Hammer Island Light	144	055/0.35	2.0	
Herbert Reefs Light	160	250/0.4	2.8	
Seabreeze Point	180	081/0.9	3.6	
Watson Rock Light	121	083/1.0	4.3	
Pitt Point Light	132	255/0.5	3.6	
McMurray Point	137	050/0.65	11.1	CIP #13A @ Baker Inlet ch 71 to ch 11
Pitt Island Light	148	231/0.4	8.0	CIP #12 ch 11
Saunders Creek Light	139	343/0.55	1.9	
Orpiston Point Light	147	236/0.15	0.6	
Mountain Point Position	134	008/0.18	1.9	
Tom Island Light	136	045/0.15	14.9	
Sainty Point Light	118	028/0.5	7.8	CIP #11 ch 11

ROUTE #10 NORTH: PRINCE RUPERT - BEAR COVE

TOTAL DISTANCE: 272.85

CHARTS: 3742, 3740, 3739, 3738, 3734, 3744, 3940

POSITION	COURSE(T)	BEARING/ RANGE	DISTANCE	REMARKS
Point Cumming Light	081	028/0.5	3.4	
Trivett Point Light	100	180/0.3	2.8	
Pilot Light	092	010/0.5	2.1	
Kingcome Point	144	210/0.35	2.9	CIP #9 ch 11
Elephant Head Position	134		8.3	
LAT 53 15.88 N LONG 128 51.25 W				
Work Island Light (Butedale Position)	105	344/0.55	2.25	
Redcliff Point	148	230/0.35	2.65	
Heddington Point	160	055/0.4	2.5	
Asher Point	168	060/0.3	1.6	
Griffin Point Light	156	029/0.4	2.4	CIP #8 ch 11
Swanson Point	174		6.1	
LAT 53 01.35 N LONG 128 31.6 W				
Netherby Point	185	077/0.35	1.3	
Quarry Point Light	200	281/0.35	1.5	
Toimie Point	186	325/0.55	5.9	
Hook Point	190	100/0.25	4.2	CIP #7 ch 11 @ Ditmars Point
Tenas Island Light	168	100/0.35	1.4	
Rocky Point Light	143	067/0.4	1.1	

ROUTE #10 NORTH: PRINCE RUPERT - BEAR COVE

TOTAL DISTANCE: 272.85

CHARTS: 3734, 3711, 3728, 3720, 3744, 3936, 3940

POSITION	COURSE(T)	BEARING/ RANGE	DISTANCE	REMARKS
Split Head Light	171	302/0.4	1.8	
Boat Bluff Light	118	102/0.32	1.35	
Pering Point	160	340/0.55	1.0	
Jane Island Light	170	270/0.88	9.9	CIP #6 @ Freeman Point ch 11
Legace Point Light	210	067/1.0	7.3	
Vanpouver Rock Light Buoy (E54)	143	090/1.3	6.85	
Ivory Island Light	100	057/1.15	5.9	
Idol Point Light	107	190/0.3	4.7	CIP #5 ch 11
Dall Rocks Light Buoy (E33)	132	222/0.25	2.7	
Dryad Point Light	224	240/0.55	1.7	
Bella Bella Dock Position	192	224/0.55	1.3	
Story Point Light	166	090/0.1	1.0	
Napier Point Light	177	265/0.1	2.85	CIP #3 @ Walker Island ch 11
German Point	103	283/0.3	3.0	
Cliff Bluff	080	035/0.4	2.1	
Serpent Point Light	115	205/0.18	2.7	
Pointer Island Light	183	270/0.82	5.3	
Fog Rocks Light	177	087/0.5	17.0	CIP #2 ch 11

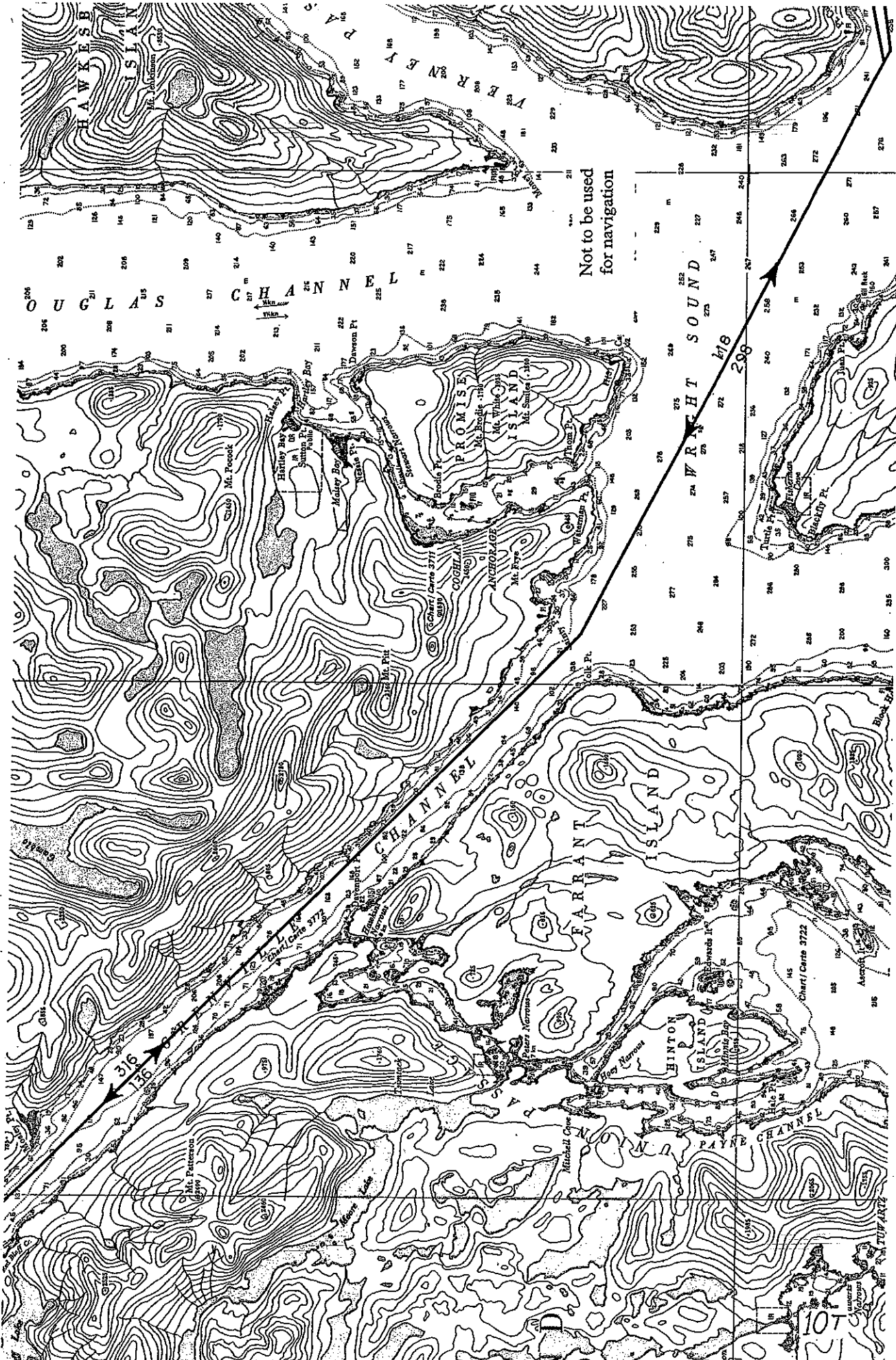
ROUTE #10 NORTH: PRINCE RUPERT -- BEAR COVE

TOTAL DISTANCE: 272.85

CHARTS: 3727, 3598, 3550, 3549, 3548, 3744, 3936, 3940

POSITION	COURSE (T)	BEARING/ RANGE	DISTANCE	REMARKS
Kwakume Point Light	169	079/0.8	5.3	
Appenbroke Island Light	172	082/0.7	9.3	
Harold Point	186	270/1.0	12.1	
Egg Island Light	163	090/2.0	16.8	CIP #39 @ Cape Caution ch 11 to ch 71
Pine Island Light	136	100/1.15	8.0	CIP #38 ch 71
Scarlett Point Light	120	178/1.5	4.7	
Crane Island Light	134	246/0.65	3.7	
Doyle Island Light	195	278/0.8	4.2	CIP #37 ch 71
Hardy Bay Position	Various		0.9	
Arrive Bear Cove				

April 6, 2004



M.V. Queen of the North

EDN Crewlist "B" Watch

EDN	POSITION	21-Mar-06	22-Mar-06	First names	
1	Master				
2	Chief Officer				
3	2nd Officer				
4	3rd Officer				
5	4th Officer				
6	Deckhand				
7	Deckhand				
8	Deckhand				
9	Deckhand-OFA				
10	Deckhand				
11	Deckhand-OFA				
12	Ch. Engineer				
13	1st Engineer				
14	2nd Engineer				
15	3rd Engineer				
16	3rd Engineer				
17	Electrician				
18	ERA				
19	Ch Steward				
20	Catering				
21	Catering				
22	Catering				
23	Catering				
24	Chief Cook				
25	Catering				
26	3rd Engineer				
27	Deckhand				
28	Deckhand				
29	3rd Engineer				
30	ERA				
31	2nd Steward				
32	Night Steward				
33	Catering				
34	Catering				
35	Hostler				
36	Catering				
37	Catering				
38	Catering				
39	Catering				
40	Extra Cook				
41	Fam Chf. Off				
42	Fam DH				
43	Catering				
44	Catering				
45	Catering				
46	Catering				
47	Catering				
48	Catering				
49	Catering				
50					
51			50 Crew 650 Passes		
52					
53					
54					
55					
56					
57					
58					
59					
60					
61					
62					
63					
64					
65					
66					

Date: _____

Signed by: _____

Master

DESIGNATED OFA: _____

**ATTACHMENT 10
BRIDGE TEAM RELEVANT EXPERIENCE**

2/O (EDN #3)			4/O (EDN #5)			Deckhand (EDN #7)		
2003			2003			2003		
Date	Vessel	Position	Date	Vessel	Position	Date	Vessel	Position
Feb 5 - 19th	QPR	2nd Officer	Jan - May	SwartzB	Deckhand	Jan - Dec		Terminal Attendant
Mar 5-19th	QPR	2nd Officer	May 14-18th	QPR	3rd Officer			
Mar 20 -21st	QON	2nd Officer	May 19 - 28th	QPR	4th Officer			
Apr 3 -21st	QON	3rd Officer	June 11th	QPR	Deckhand			
May 15 -28th	QON	2nd Officer	June 12 - 25th	QPR	4th Officer			
Jun 12 - 25th	QON	2nd Officer	July 9- 23rd	QPR	4th Officer			
July 10 - 23rd	QON	2nd Officer	Aug 6 - 20th	QPR	Deckhand			
Aug 6 - 20th	QPR	4th Officer	Sep 6 - 13th	QPR	Deckhand			
Oct 1- 7th	QPR	4th Officer	Sep 14 - 17th	QPR	4th Officer			
Oct 8 - 10th	QPR	2nd Officer	Oct 1 - 7th	QPR	Deckhand			
Oct 11-13th	QPR	4th Officer	Oct 8 - 10th	QPR	4th Officer			
Oct 14 - 15th	QPR	2nd Officer	Oct 11 - 13th	QPR	Deckhand			
Imbalanced from spring			Oct 14 - 15th	QPR	4th Officer			
Nov 12 - 17th	QPR	3rd Officer	Oct 29 - Nov 12th	QPR	4th Officer			
Nov 18 - 20th	QPR	2nd Officer	Nov 26 Dec 2nd	QPR	Deckhand			
Nov 21 - 26th	QPR	3rd Officer	Dec 3rd	QPR	4th Officer			
Dec 10 - 22nd	QPR	2nd Officer	Dec 4 - 9th	QPR	Deckhand			
			Dec 10th	QPR	4th Officer			
			Dec 27-31st	QPR	Deckhand			
2004			2004			2004		
Jan 21-26th	QPR	3rd Officer	Jan 1-4th	QPR	Deckhand	Jan-December		Terminal Attendant
March 17th	QON	2nd Officer	Jan 5-7th	QPR	4th Officer	2005		
Mar 18-25th	QON	3rd Officer	Jan 8th-Feb 1st	Terminal Attendant		January		Terminal Attendant
Mar 26-31st	QON	4th Officer	Feb 2-4th	QPR	4th Officer	Feb 22-Mar 1st	QPR	Fam-Deckhand
Apr 13-20th	QON	Deckhand	Feb 5th-May 25th	Terminal Attendant		Mar 3-6th	QPR	Fam-Deckhand
May 21-25th	QON	2nd Officer	May 26th-June 9th	QPR	Fam-Hostler	Mar 30-Apr 1st	QPR	Deckhand
June 19-July 3rd	QOC	4th Officer	June 23-30th	QPR	4th Officer	Apr 5th-10th	QON	Fam-Deckhand
July 17-19th	QOC	4th Officer	July 2-6th	QPR	Fam-Hostler	Apr 13th	QON	Deckhand
July 21-Aug 4th	QPR	2nd Officer	July 7th & 8th	QPR	4th Officer	Apr 26th	QON	Deckhand
Aug 14-27th	QOC	4th Officer	July 21-Aug 4th	QPR	4th Officer	May 11-25th	QPR	Deckhand
Oct 27th-Nov 9th	QPR	2nd Officer	Aug 18th-25th	QPR	Deckhand	June 8th-21st	QPR	Deckhand
2005			Aug 26th-28th	QPR	4th Officer	July 6-20th	QPR	Deckhand
Jan 5-19th	QPR	2nd Officer	Aug 29-31st	QPR	Deckhand	Aug 3rd-16th	QPR	Deckhand
Feb 6th-15th	QPR	2nd Officer	Sept 15-21st	QPR	Deckhand	Aug 31st-Sep 5th	QPR	Deckhand
Mar 2-15th	QPR	2nd Officer	Sept 22nd	QPR	Hostler	Sep 7th-14th	QPR	Deckhand
Mar 30-Apr 12th	QON	2nd Officer	Sept 30-Oct 10th	QON	3rd Officer	Sep 28th-Oct 3rd	QPR	Deckhand
Apr 27-May 11th	QON	2nd Officer	Oct 28th-Nov 4th	QPR	3rd Officer	Oct 12th	QPR	Deckhand
June 4-June 17th	QOC	4th Officer	Nov 24th-Dec 4th	QPR	4th Officer	Oct 23rd-Nov 2nd	QPR	Deckhand
July 2-July 15th	QOC	4th Officer	Dec 5th-8th	QPR	3rd Officer	Nov 23rd-26th	QPR	Deckhand
July 30th-Aug 13th	QOC	4th Officer	2005			Dec 14-21st	QPR	Deckhand
Aug 27-Sep 7th	QOC	4th Officer	Jan 24-30th	QPR	Deckhand	Dec 25-Jan 2nd	QPR	Deckhand
Sep 28th-Oct 1st	QON	2nd Officer	Jan 31st-Feb 4th	QPR	4th Officer	2006		
Oct 26th-Nov 6th	QPR	3rd Officer	Feb 16th-19th	QPR	4th Officer	Jan 18th	QPR	Deckhand
Nov 7-9th	QPR	2nd Officer	Feb 20-22nd	QPR	3rd Officer	Jan 30th-31st	QPR	Deckhand
Nov 20-22nd	QPR	Chief Officer	Feb 23rd-Mar 1st	QPR	4th Officer	Feb 6th - 9th	QPR	Deckhand
Nov 23-24th	QPR	2nd Officer	Mar 16-28th	QPR	Deckhand	Feb 11 - 14th	QPR	Deckhand
Nov 26-Dec 7th	QPR	4th Officer	Mar 29-30th	QPR	4th Officer	Feb 21 - Mar 4th	QPR	Deckhand
2006			Apr 13-27th	QON	4th Officer	Mar 15 - 16th	QON	Deckhand
Jan 18-Feb 1st	QPR	2nd Officer	May 11th-25th	QPR	4th Officer	Mar 20 - 22nd	QON	Deckhand
March 15-22nd	QON	2nd Officer	June 8-21st	QPR	4th Officer			
			July 6th-20th	QPR	2nd Officer			
			Aug 3rd	QPR	4th Officer			
			Aug 4th-16th	QPR	Deckhand			
			Aug 31st-Sep 10th	QPR	Deckhand			
			Sep 11-14th	QPR	4th Officer			
			Sep 28-Oct 4th	QPR	4th Officer			
			Oct 26th-Nov 6th	QPR	4th Officer			
			Nov 7 - 8th	QPR	3rd Officer			
			Nov 23-25th	QPR	4th Officer			
			Nov 26-Dec 7th	QPR	Deckhand			
			2006					
			Jan 18-31st	QPR	3rd Officer			
			Feb 15-Mar 1st	QPR	4th Officer			
			Mar 3-4th	QPR	Hostler			
			Mar 5-6th	QON	Hostler			
			Mar 15-22nd	QON	3rd Officer			

M.V. QUEEN OF THE NORTH FIRE AND BOAT STATION MUSTER LIST

SIGNAL FOR FIRE STATIONS: Continuous ringing of alarm. (The person discovering a fire will immediately notify Bridge by sounding nearest alarm and then fight the fire with available equipment)
SIGNAL FOR BOAT STATIONS: Seven or more short blasts on whistle followed by one long blast, similar signal on alarm.
SIGNAL FOR MAN OVERBOARD: Three long blasts on the whistle followed by similar signal on alarm. (Throwlife-buoys overboard. Inform Bridge. An emergency boat crew shall immediately clear a boat for launching.)
SIGNAL FOR RESCUE BOAT CREW: Verbal command byVHF hand held radios and/or Pssystem.

A B C D

Employee Designation	Number	PORT	NO. 2 LIFEBOAT	FIRE STATION	NO. 1 LIFEBOAT	FIRE STATION	STARBOARD
MASTER	1	E	D	E	D	E	
CHIEF OFFICER	2	D	N	N	N	N	
2ND OFFICER	3	RANK	RANK	RANK	RANK	RANK	
3RD OFFICER	4	LIFEBOAT/LIFERAFT STATION	LIFEBOAT/LIFERAFT STATION	LIFEBOAT/LIFERAFT STATION	LIFEBOAT/LIFERAFT STATION	LIFEBOAT/LIFERAFT STATION	
4TH OFFICER	5	In charge of port side	Fire party: In charge	Clear-away party: In charge +	In charge of starboard side	Fire party: 2nd-in-charge: Report "Fire party/mustered"	Fire party: 2nd-in-charge: Report "Fire party/mustered"
DECKHAND	6	Bring lifeboat radio - Bowman	Fire party: Fireman's suit and SCBA from deck 7 All Ready Room	Communicator	Bring GMDSS & spare batteries	Engine room	Engine room
DECKHAND	7	Motor	Engine room	Bowman - bring Aldis lamp & battery	Bridge: Helm See Note	Clear-away party* See Note	Clear-away party: See Note
DECKHAND	8	Lower boat	Fire party: Fireman's suit and SCBA from deck 5 All Ready Room	Engine room	Sprinkler control room	Sprinkler control room	Engine room
DECKHAND	9	Assist launch - Pass. control	Zones 27 & 28 (tween deck, aft): Evacuate cabins, report to Ch. Stwd	16 3rd Engineer	Fire party: Fireman's suit and SCBA from deck 5 All Ready Room	Fire party: Fireman's suit and SCBA from deck 5 All Ready Room	Fire party: Fireman's suit and SCBA from deck 5 All Ready Room
DECKHAND	10	Assist launch - Pass. control	Deck 5: Cablateria: Pass. control	18 ERA	Lower boat	Engine room	Engine room
DECKHAND	11	Assist launch	Deck 5: Cablateria: Pass. control	26 3rd Engineer	Assist launch	Fire party: Fireman's suit and SCBA from Bng. See Note	Fire party: Fireman's suit and SCBA from Bng. See Note
DECKHAND	12	Assist launch	Deck 5: Cablateria: Pass. control	27 Deckhand	Assist launch		
CHENGINEER	13						
1ST ENGINEER	14						
2ND ENGINEER	15						
3RD ENGINEER	16						
3RD ENGINEER	17						
ELECTRICIAN	18						
ERA	19						
CHESTEWARD	20						
CATERING	21						
CATERING	22						
CATERING	23						
CATERING	24						
CHECOOK	25						
CATERING	26						
3RD ENGINEER	27						
DECKHAND	28						
DECKHAND	29						
DECK ENGINEER	30						
ERA	31						
2ND STEWARD	32						
NIGHT STEWARD	33						
CATERING	34						
CATERING	35						
BAR STEWARD	36						
COOK	37						
COOK	38						
COOK	39						
CATERING	40						
CATERING	41						
CATERING	42						
CATERING	43						
CATERING	44						
CATERING	45						
CATERING	46						
CATERING	47						
CATERING	48						
CATERING	49						
CATERING	50						
CATERING	51						
CATERING	52						
CATERING	53						
CATERING	54						
CATERING	55						
CATERING	56						
CATERING	57						
CATERING	58						
CATERING	59						
CATERING	60						

Additional crew assigned as per Chief Officer directions

Note: During an Emergency "On Watch Quartermaster" to remain at wheel until released bymaster.
 During emergency at "FINISHED WITH ENGINE" engine-room staff will leave engine-room and proceed to assigned stations
 Passenger assemblystations will be announced over public address system
 Relief crew to take places of crew they are relieving
 Signal for emergency/boat, check with your Chief Officer
 Signal for abandon ship will be given verbally by the Master.

REVISED: February 2006

**ATTACHMENT 12
MARCH 2006 SAILING SCHEDULE**

Queen of the North Mar06

Route	Vessel	Dep Terminal	Arr Terminal	Sched Dep	Sched Arr	Actual Dep	Actual Dep Day	Actual Dep Time	Actual Arr	Bus	Semi	Comm	Pvoh	Pvuh	Mtcy	Veh Pass	Foot Pass	Total
RC	North, Queen of the	Tsawwassen	Bear Cove (Port Hardy)	03-03-06 09:30	03-03-06 23:00	03-03-06 09:32	March 03, 2006	09:32	03-03-06 21:24					35		75	43	118
10	North, Queen of the	Bear Cove (Port Hardy)	McLoughlin Bay	04-03-06 18:00	05-03-06 00:30	04-03-06 18:21	March 04, 2006	18:21	05-03-06 00:18	2	4	2	7	31		108	103	211
10	North, Queen of the	McLoughlin Bay	Prince Rupert	05-03-06 01:15	05-03-06 13:15	05-03-06 01:29	March 05, 2006	01:29	05-03-06 13:10	2		1	3	20		80	35	115
11	North, Queen of the	Prince Rupert	Skidegate (Q. Charlottes)	05-03-06 23:00	06-03-06 06:00	06-03-06 00:17	March 06, 2006	00:17	06-03-06 06:14		11		6	28		76	27	103
11	North, Queen of the	Skidegate (Q. Charlottes)	Prince Rupert	06-03-06 11:00	06-03-06 17:30	06-03-06 11:01	March 06, 2006	11:01	06-03-06 17:27		7	2	3	20		61	36	97
11	North, Queen of the	Prince Rupert	Skidegate (Q. Charlottes)	06-03-06 23:00	07-03-06 06:00	06-03-06 22:59	March 06, 2006	22:59	07-03-06 06:07		6	1	1	16		35	68	103
11	North, Queen of the	Skidegate (Q. Charlottes)	Prince Rupert	07-03-06 11:00	07-03-06 17:30	07-03-06 11:05	March 07, 2006	11:05	07-03-06 16:25		8		3	16		33	9	42
10	North, Queen of the	Prince Rupert	McLoughlin Bay	07-03-06 20:00	08-03-06 06:30	07-03-06 20:00	March 07, 2006	20:00	08-03-06 13:35				5	20		64	37	101
10	North, Queen of the	McLoughlin Bay	Bear Cove (Port Hardy)	08-03-06 07:00	08-03-06 13:30	08-03-06 14:00	March 08, 2006	14:00	09-03-06 06:24		1		7	23		81	34	115
10	North, Queen of the	Bear Cove (Port Hardy)	McLoughlin Bay	08-03-06 16:30	08-03-06 23:00	09-03-06 08:34	March 09, 2006	08:34	09-03-06 13:52				4	18		41	19	60
10	North, Queen of the	McLoughlin Bay	Prince Rupert	08-03-06 23:30	09-03-06 10:30	09-03-06 14:03	March 09, 2006	14:03	09-03-06 23:22				4	18		41	19	60
11	North, Queen of the	Prince Rupert	Skidegate (Q. Charlottes)	10-03-06 03:00	10-03-06 07:30	10-03-06 02:56	March 10, 2006	02:56	10-03-06 08:26		9	1	3	32		81	26	107
11	North, Queen of the	Skidegate (Q. Charlottes)	Prince Rupert	10-03-06 10:30	10-03-06 15:30	10-03-06 12:09	March 10, 2006	12:09	10-03-06 17:26		11		9	45		154	38	192
10	North, Queen of the	Prince Rupert	McLoughlin Bay	10-03-06 17:00	11-03-06 03:30	10-03-06 20:03	March 10, 2006	20:03	11-03-06 05:43		1		2	36		103	97	200
10	North, Queen of the	McLoughlin Bay	Bear Cove (Port Hardy)	11-03-06 04:15	11-03-06 10:45	11-03-06 06:44	March 11, 2006	06:44	11-03-06 12:05		3	1	3	53		209	99	308
10	North, Queen of the	Bear Cove (Port Hardy)	McLoughlin Bay	11-03-06 18:00	12-03-06 00:30	11-03-06 18:00	March 11, 2006	18:00	12-03-06 00:24		2	2	3	44		98	48	146
10	North, Queen of the	McLoughlin Bay	Prince Rupert	12-03-06 01:15	12-03-06 13:15	12-03-06 01:11	March 12, 2006	01:11	12-03-06 12:58				3	28		66	39	105
11	North, Queen of the	Prince Rupert	Skidegate (Q. Charlottes)	12-03-06 23:00	13-03-06 06:00	12-03-06 23:00	March 12, 2006	23:00	13-03-06 06:04		12	1	4	41		120	21	141
11	North, Queen of the	Skidegate (Q. Charlottes)	Prince Rupert	13-03-06 11:00	13-03-06 17:30	13-03-06 11:00	March 13, 2006	11:00	13-03-06 17:07		8		1	33		83	18	101
11	North, Queen of the	Prince Rupert	Skidegate (Q. Charlottes)	13-03-06 23:00	14-03-06 06:00	13-03-06 23:00	March 13, 2006	23:00	14-03-06 06:05		5	2	7	21		75	14	89
11	North, Queen of the	Skidegate (Q. Charlottes)	Prince Rupert	14-03-06 11:00	14-03-06 17:30	14-03-06 11:03	March 14, 2006	11:03	14-03-06 17:03		7		3	16		48	8	56
11	North, Queen of the	Prince Rupert	Skidegate (Q. Charlottes)	16-03-06 13:30	16-03-06 20:00	16-03-06 13:31	March 16, 2006	13:31	16-03-06 20:00		7		6	40		117	21	138
11	North, Queen of the	Skidegate (Q. Charlottes)	Prince Rupert	16-03-06 23:00	17-03-06 07:00	16-03-06 23:00	March 16, 2006	23:00	17-03-06 07:00		6	3	3	49		155	28	183
10	North, Queen of the	Prince Rupert	McLoughlin Bay	17-03-06 11:00	17-03-06 23:00	17-03-06 11:01	March 17, 2006	11:01	17-03-06 23:00		1			36		80	36	116
10	North, Queen of the	McLoughlin Bay	Bear Cove (Port Hardy)	17-03-06 23:45	18-03-06 08:00	17-03-06 23:45	March 17, 2006	23:45	18-03-06 08:00		2	2		41		109	30	139
10	North, Queen of the	Bear Cove (Port Hardy)	McLoughlin Bay	18-03-06 18:00	19-03-06 00:30	18-03-06 18:02	March 18, 2006	18:02	19-03-06 00:30		3	2	4	56		238	109	347
10	North, Queen of the	McLoughlin Bay	Prince Rupert	19-03-06 01:15	19-03-06 13:15	19-03-06 01:15	March 19, 2006	01:15	19-03-06 13:15		1	1	1	35		103	107	210
11	North, Queen of the	Prince Rupert	Skidegate (Q. Charlottes)	19-03-06 23:00	20-03-06 06:00	19-03-06 23:04	March 19, 2006	23:04	20-03-06 06:00		7		8	35		122	30	152
11	North, Queen of the	Skidegate (Q. Charlottes)	Prince Rupert	20-03-06 11:00	20-03-06 17:30	20-03-06 11:00	March 20, 2006	11:00	20-03-06 17:30		5		4	19		72	17	89
11	North, Queen of the	Prince Rupert	Skidegate (Q. Charlottes)	20-03-06 23:00	21-03-06 06:00	20-03-06 23:01	March 20, 2006	23:01	21-03-06 06:00		4			17		40	15	55
11	North, Queen of the	Skidegate (Q. Charlottes)	Prince Rupert	21-03-06 11:00	21-03-06 17:30	21-03-06 11:00	March 21, 2006	11:00	21-03-06 17:15		9		4	18		57	14	71

ATTACHMENT 13
MASTER'S HANDOVER NOTES

Master's Handover Notes

Queen of The North

March 15, 2006

██████████, welcome back, hope days off went well.

First of all I'd like to wish you all the best in the new position. I think you will find it both challenging and rewarding.

Aside from weather delays things have gone well this shift. Machinery and equipment all in good order. The steering modifications were a success, the system including the new gyro and repeaters has performed flawlessly. ██████████ was on last weekend so we swung the compass in Hardy Bay during the Saturday layover. The report is in the compass file in our file cabinet.

I have posted information notices at the steering stations listing the changes to the switch over sequences for helm etc. ██████████ is on for Chief Officer family so we are providing him with all the info we have regarding changes.

The updated Muster List is complete and posted on board. This reflects changes to fire party and to the new Ready Rooms. I have included a summary of the fire party changes in the handover file.

The Refit check list is in the handover file.

With Nimpkish serving Shearwater, Ocean Falls, and Klemtu QON is able to run at reduced speed on most voyages resulting in significant fuel savings. A data sheet for each voyage since March 4 is in handover file.

There are several SI-07s from last TC inspections. All are in hand or completed except for an evacuation plan for the ship. If you get a chance I would appreciate your input. The file is in the desk top file holder.

The Lawn Point ranges are gone and the sector light and RACON are in place. ██████████ was on West and East so he is aware of the changes.

That's about it so have a good shift.

Dod

ATTACHMENT 14
STEERING CHANGEOVER PROCEDURES

A copy of this document was posted in the wheelhouse of the *Queen of the North* and was lost with the vessel.

This document is a re-creation of the document prepared by the Chief Officer, "A" crew and the Senior Master, *Queen of the North*.

(A copy of this document was left with the hand-over information for the oncoming Chief Officer on March 15, 2006.)

Changeover Procedures

To change from hand steering to autopilot the Officer of the Watch will ensure the Quartermaster has steadied on the given course and the wheel is placed at midships. The Officer of the Watch will select the autopilot position on the Compilot 8. Any further corrections to the course while on autopilot can be made with the dial for course adjustments by pressing down on the dial and rotating until the desired course is reached then releasing, or by pressing "select course" dialing in the new course and pressing "set". The other option is to switch to "tiller position" and steer using the tiller. (The "forward" wheel on the Compilot 8 is not active due to the fact that the selector switch on the main console is set for the "aft" helm station.)

To revert to hand steering the officer of the watch gives the Quartermaster the order to take the wheel at the main desk and the Quartermaster returns to the aft wheel position, when the Officer of the Watch has made sure the Quarter Master is in place and has readjusted the compass lights, etcetera, the Officer of the Watch switches the switch on the Compilot 8 to "wheel" which makes the after helm position active.

With the selector switch on the main desk in any position the "tiller" on the Compilot 8 can be selected and will override all other stations.

When it is necessary to move the rudders from the steering gear compartment the "tiller" position on the Compilot 8 in the wheelhouse should be selected as this will allow the rudder position to be chosen from the steering gear compartment without being overridden from another station.

Also on this document there were instructions on the protocol for selecting two steering systems for "standby" and information on selecting the starboard steering system for black-out as this system had the back-up power from the emergency generator.

// Signed //
"Senior Master, Queen of the North"

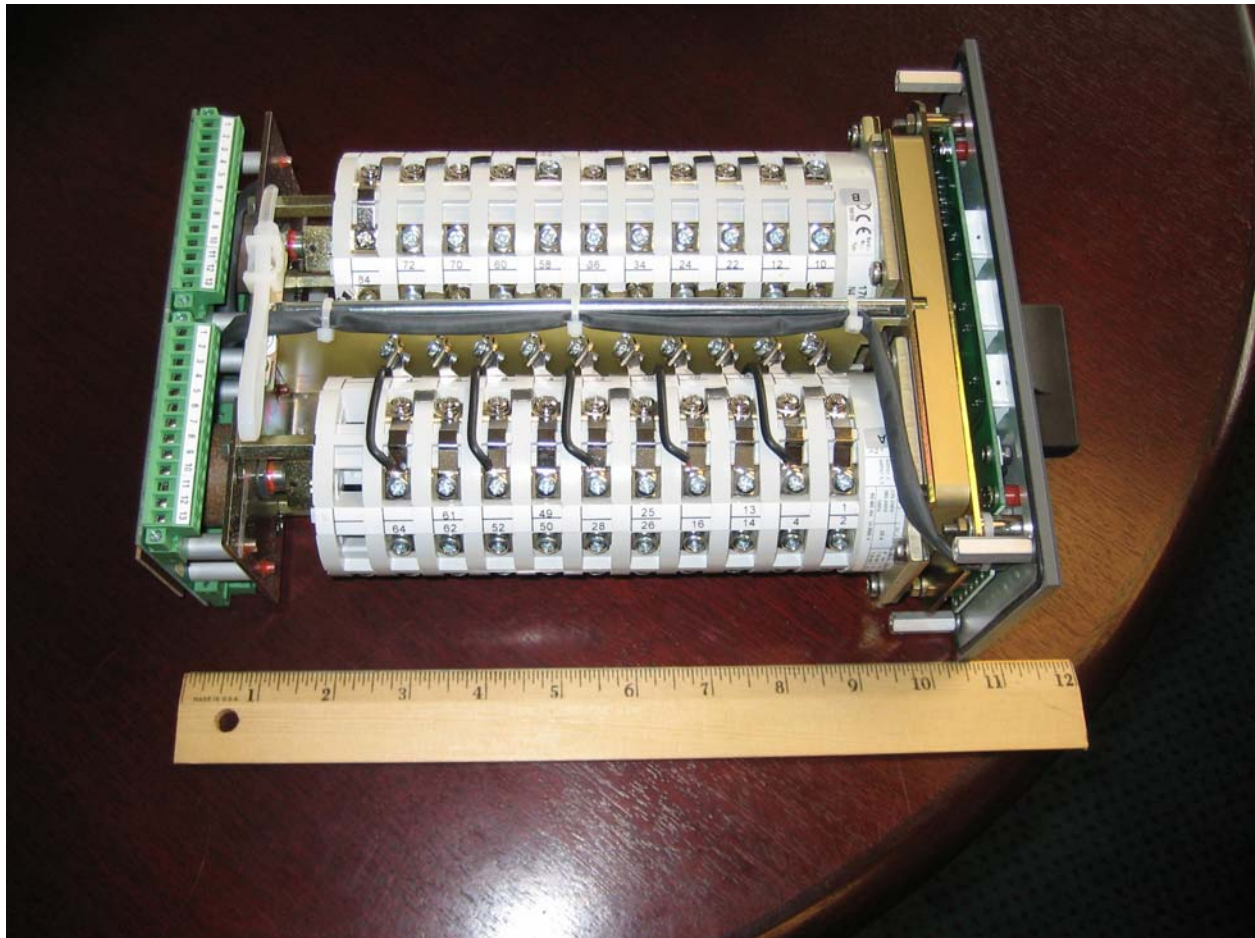
ATTACHMENT 15
STEERING CHANGEOVER SWITCH PHOTOGRAPHS



**ATTACHMENT 15
STEERING CHANGEOVER SWITCH PHOTOGRAPHS**



**ATTACHMENT 15
STEERING CHANGEOVER SWITCH PHOTOGRAPHS**



**ATTACHMENT 16
FORWARD HELM STATION**



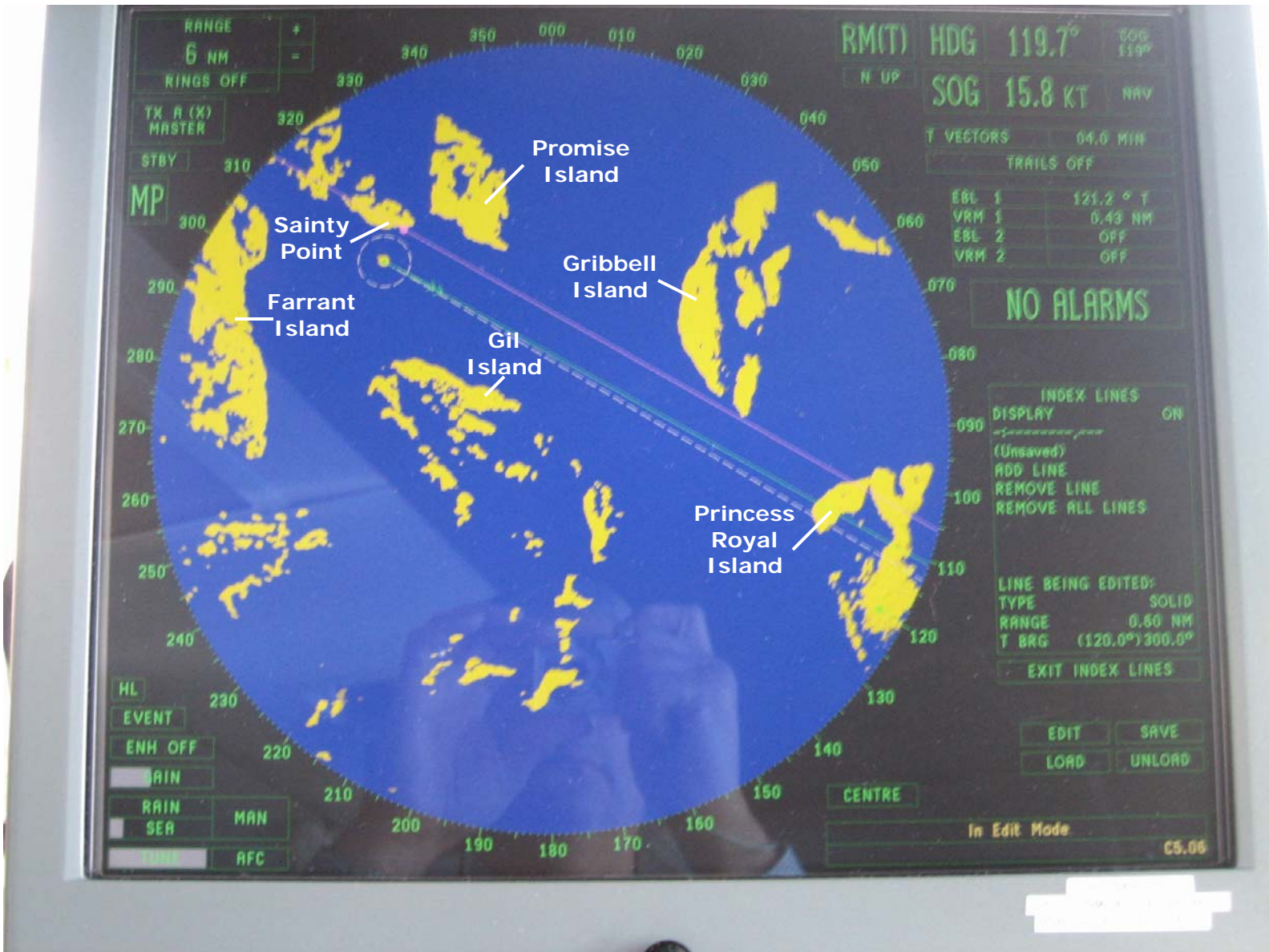
**ATTACHMENT 16
FORWARD HELM STATION**

STEERING MODE SELECTOR SWITCH



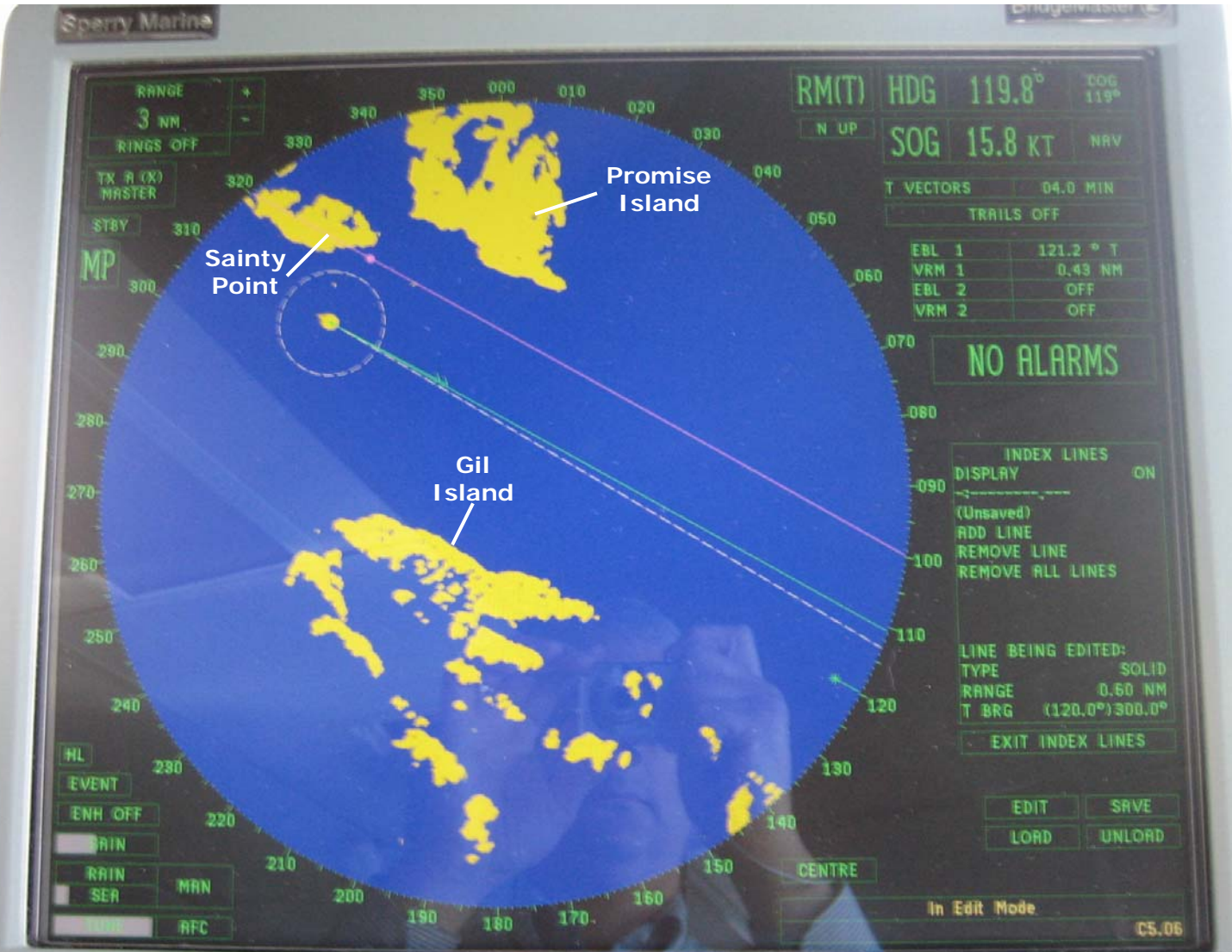
ATTACHMENT 17
SURFACE RADAR (X BAND)
SPERRY MARINE 340 "E" SERIES
(from *Queen of Prince Rupert*, August 23, 2006)

RANGE: 6 NM



ATTACHMENT 17
SURFACE RADAR (X BAND)
SPERRY MARINE 340 "E" SERIES
(from *Queen of Prince Rupert*, August 23, 2006)

RANGE: 3 NM



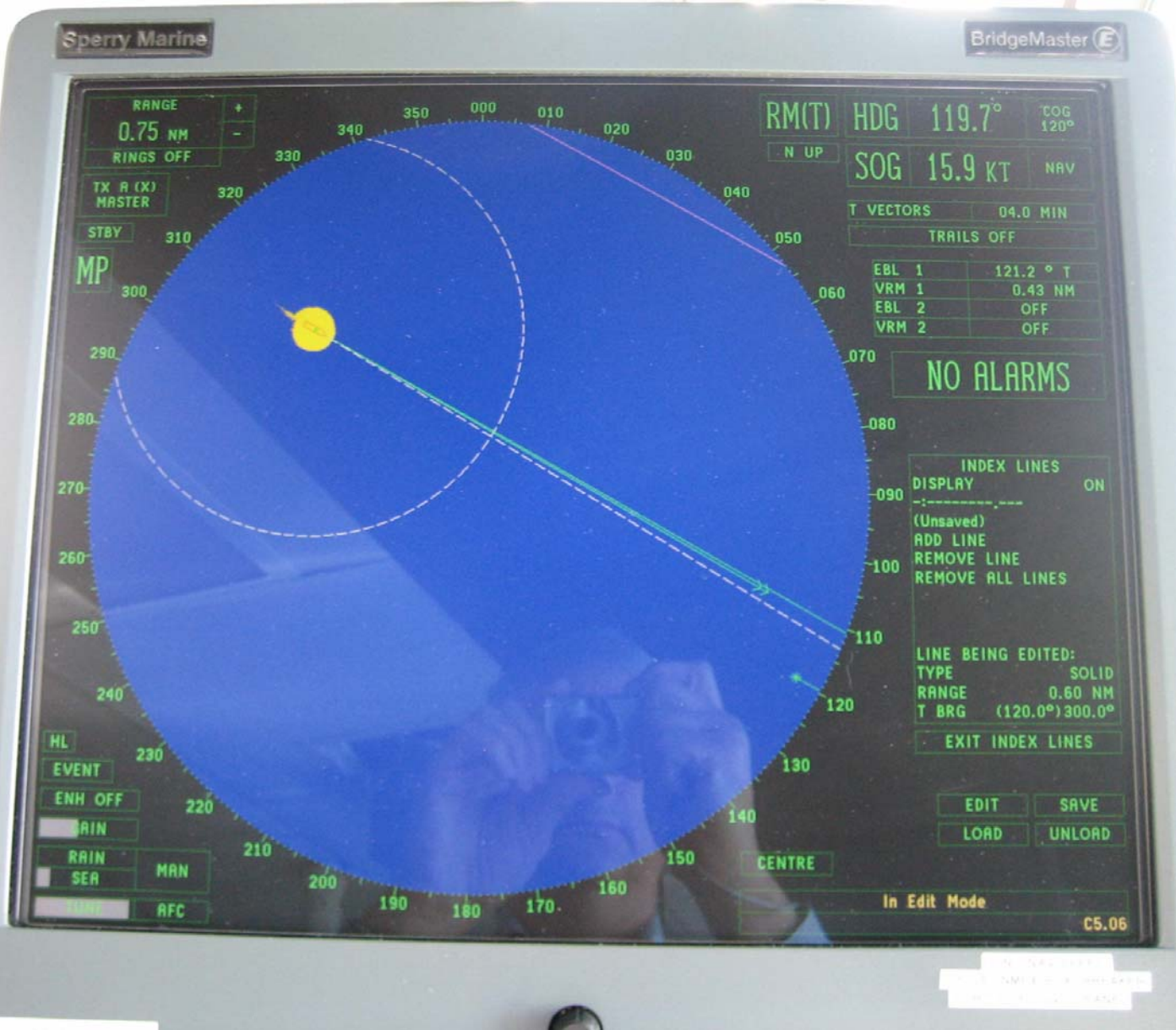
ATTACHMENT 17
SURFACE RADAR (X BAND)
SPERRY MARINE 340 "E" SERIES
(from *Queen of Prince Rupert*, August 23, 2006)

RANGE: 1.5 NM



ATTACHMENT 17
SURFACE RADAR (X BAND)
SPERRY MARINE 340 "E" SERIES
(from *Queen of Prince Rupert*, August 23, 2006)

RANGE: 0.75 NM



ATTACHMENT 18
TRANSAS NAVISAILOR 3000 DESKTOP MODEL
ELECTRONIC CHART SYSTEM (ECS)
(Similar to system on the *Queen of the North*)



ATTACHMENT 18
ELECTRONIC CHART SYSTEM (ECS)
SHOWING WRIGHT SOUND



ATTACHMENT 19
MCTS RADIO RECORDING TRANSCRIPTION 21/22 MARCH 2006
Queen of the North Investigation
(Transcribed by: Vice President, Fleet Operations)

Time	Tape Counter	From	To	Transcript	Operator
21 Mar, 2006					
	0:00:00	QON	VTS	Traffic, Queen of the North	
22:08:00		VTS	QON	Queen of the North, Traffic, Good Evening, Go Ahead	
22:08:05	0:00:05	QON	VTS	Good evening Traffic, we're at Baker at this time, our ETA Pitt Island Light 2235, over	
22:08:15	0:00:15	VTS	QON	Queen of the North, Prince Rupert traffic, Roger. There is no reported traffic, over	
22:08:20	0:00:20	QON	VTS	Roger, Copy, No reported, Thanks Standing By	
22:08:24	0:00:24	VTS	Castle Lake	Castle Lake, Prince Rupert Traffic request position update	
22:00:56	0:00:56	Castle Lake	VTS	Just rounding Jenkinson Point, 53 degrees 26 N 129 degrees 05	
22:01:15	0:01:15	VTS	Castle Lake	Roger, Copy standing by your call in 4 hours, no reported traffic	
22:37:23	0:29:23	QON	VTS	Prince Rupert Traffic, Queen of the North (background noises audible)	
22:37:24	0:29:35	VTS	QON	Queen of the North, Traffic, go ahead	
22:37:40	0:29:40	QON	VTS	Traffic, we're at Pitt Island Light, ETA Sainty Point 2320, and for, correction, for Tom Island 2320, and for Sainty Point 0005 (music audible in background)	
22:37:54	0:29:54	VTS	QON	Queen of the North, Prince Rupert Traffic. Roger, There's no reporting traffic	
22:37:56	0:29:56	QON	VTS	Roger (background music audible)	
Mar 22, 2006					
00:03:34	1:55:34	QON	VTS	Prince Rupert Traffic, Queen of the North (background noise apparent)	EDN #5
00:03:40	1:55:40	VTS	QON	Queen of the North, Traffic, Go ahead	
00:03:42	1:55:42	QON	VTS	Traffic, Queen of the North. Just approaching Sainty, ETA Kingcome 0100. Over (background unidentifiable music)	EDN #5
00:03:50	1:55:49	VTS	QON	Queen of the North, Prince Rupert Traffic, Roger. You may see Tug Castle Lake, they're running slow with 23 sections of logs, They should be rounding Money Point, Over.	
00:04:03	1:56:03	QON	VTS	Roger. Coming down Douglas Channel? (background noise/music)	EDN #5
00:04:08	1:56:08	VTS	QON	Negative. They're coming down Verney Pass	
00:04:11	1:56:11	QON	VTS	Okay. Thanks (music in background audible)	EDN #5
00:23:40	2:15:40	QON	VTS	Traffic, this is the Queen of the North, Queen of the North, Queen of the North	
00:23:46	2:15:46	VTS	QON	Queen of the North, This is Traffic, Go ahead	
00:23:48	2:15:48	QON	VTS	Traffic, Traffic, We have run aground South of Sainty Point, several miles South of Sainty Point. Standby for position	
00:23:56	2:15:56	VTS	QON	Roger, Standing by	
00:24:01	2:16:01	QON	VTS	53 19 29 (pause) 113 29 37	
00:24:14	2:16:14	VTS	QON	Stand-by... Queen of the North, Prince Rupert Traffic, Say again your position	
00:24:21	2:16:21	QON	VTS	Stand-by	
00:24:56	2:16:56	VTS	QON	Queen of the North, Prince Rupert Traffic. What is your position? Over.	

Time	Tape Counter	From	To	Transcript	Operator
00:25:02	2:17:02	QON	VTS	Our position is, This is the Queen of the North, 29 19 North, 131 (what's the second part of that?) 13 West	EDN #4
00:25:27	2:17:27	VTS	QON	Queen of the North, Prince Rupert Traffic, Roger, and do you require assistance?	
00:25:33	2:17:33	QON	VTS	Roger, We require assistance.	EDN #4
00:25:40	2:17:40	VTS	QON	Roger. And confirm you are not taking on water? Over.	
00:25:45	2:17:45	QON	VTS	We are taking on water.	EDN #4
00:25:49	2:17:49	VTS	QON	Roger. Stand-by.	
00:26:51	2:18:51	QON	VTS	Queen of the North, Prince Rupert Traffic	
00:26:57	2:18:57	VTS	QON	Traffic, Queen of the North	EDN #1
00:27:00	2:19:00	QON	VTS	Say again your position. This position you gave me is not correct, it places you in Hecate Strait. What is your position? Latitude? Longitude?	
00:27:08	2:19:08	QON	VTS	South end of Saintry Point. Stand-by for Lat/Long. And we are aground, our list is increasing, we need assistance immediately.	EDN #1
00:27:18	2:19:18	VTS	QON	Roger. We'll put a broadcast out on your behalf.	
00:27:23	2:19:23	QON	VTS	We're aground near Juan Point, Juan Point, Over.	EDN #1
00:27:30	2:19:30	VTS	QON	Roger. Copy.	
00:27:50	2:19:50	VTS	QON	Queen of the North, Prince Rupert Traffic, How many people do you have onboard? (406 Mhz EPIRB audible in background)	
00:28:07	2:20:07	QON	VTS	We have a hundred and one persons onboard the ship.	EDN #4
00:28:13	2:20:13	VTS	QON	Roger. Are you at Muster Stations?	
00:28:19	2:20:19	QON	VTS	Say again?	
00:28:24	2:20:24	VTS	QON	Are they proceeding to life rafts? Over.	
00:28:26	2:20:26	QON	VTS	Yes, Traffic, we are proceeding to lifeboats and life rafts.	EDN #4
00:28:30	2:20:30	VTS	QON	Roger.	
00:28:36	2:20:36	PR CG Radio		Prince Rupert Coast Guard Radio, Over.	
00:28:40	2:20:40	Lone Star	PR CG Radio	Prince Rupert Coast Guard Radio, Fishing vessel Lone Star	
00:28:45	2:20:45	PR CG	Lone Star	Lone Star, Prince Rupert Coast Guard Radio, go ahead	
00:28:50	2:20:50	Lone Star	PR CG Radio	We're just, um, entered Stuart Narrows here, seeking refuge from the blow. We're a thirty-seven foot fishing vessel, shrimp vessel. We'll lend whatever assistance we can, what's required.	
00:29:11	2:21:11	PR CG Radio	Lone Star	Proceed...(lost transmission)	
00:29:37	2:21:37	PR CG Radio	Lone Star	Roger, and how far are you from (garbled)	
00:29:39	2:21:39	VTS	SWL	Sir Wilfred Laurier, Prince Rupert Traffic.	
00:29:41	2:21:41	SWL	VTS	Traffic, The Laurier, Go Ahead.	
00:29:45	2:21:45	VTS	SWL	What is your position?	
00:29:50	2:21:50	SWL	VTS	We're currently in Bernard Harbour, and we heard the SAR call. We've ordered propulsion and we'll be underway in twenty minutes, Over.	
00:29:50	2:21:50	VTS	SWL	Roger. Do you have an ETA?	
00:29:55	2:21:55	SWL	VTS	Negative. Stand-by. We'll get back to you with that. Over.	
00:29:58	2:21:58	VTS	SWL	Roger. Copy.	
00:30:02	2:22:02	Lone Star	unk	...about three miles.	
00:30:08	2:22:08	PR CG	Lone Star	Roger. ETA on scene three-zero minutes.	

Time	Tape Counter	From	To	Transcript	Operator
		Radio			
00:30:15	2:22:15	Lone Star	PR CG Radio	I'm proceeding up towards Hartley Bay. We'll be putting our poles down then making our way back towards the scene.	
00:30:25	2:22:25			Roger. Standing by on Channel one six. Over.	
00:30:48	2:22:48	VTS	QON	Queen of the North, Prince Rupert Traffic.	
00:31:00	2:23:00	QON	VTS	Traffic, the Queen of the North. Go ahead.	EDN #4
00:31:02	2:23:02	VTS	QON	Roger. Request an update on your situation.	
00:31:06	2:23:06	QON	VTS	Traffic, we've developed a slight starboard list here, I'd say about twelve degrees from my indication. Boats are getting readied. That's all I know right now. I believe they're setting pumps in the engine room.	EDN #4
00:31:35	2:23:35	VTS	QON	Roger. And do you have a position, latitude and longitude, Over.	
00:31:44	2:23:44	QON	VTS	Hold one, hold one.	
00:32:26	2:24:26	QON	VTS	Prince Rupert Traffic, Queen of the North. At this time, Point Cummings is bearing from us – one-zero-one degrees, by four miles.	EDN #1
00:32:40	2:24:40	VTS	QON	Roger. Confirm you do not have a position with latitude and longitude. Over.	
00:32:48	2:24:48	QON	VTS	Hold one, Traffic.	EDN #1
00:34:01	2:26:01	Hartley Bay	VTS	Prince Rupert Traffic, this is Hartley Bay.	
00:34:04	2:26:04	VTS	Hartley Bay	Hartley Bay, Traffic. Go ahead.	
00:34:07	2:26:07	Hartley Bay	VTS	Roger. Yea, just wondering what the weather report is where the Queen of the North is. Over.	
00:34:14	2:26:14	VTS	Hartley Bay	Hartley Bay, Prince Rupert Traffic. Stand-by.	
00:34:20	2:26:20	VTS	unk	Sawadee(), Traffic, Go ahead.	
00:34:30	2:26:30	VTS	unk	Station calling Traffic, Go ahead.	
00:34:45	2:26:45	VTS	Broadcast	MAYDAY relay, MAYDAY relay, MAYDAY relay. ALL STATIONS, ALL STATIONS. This is Prince Rupert Coast Guard Radio, Prince Rupert Coast Guard Radio. Channel one-one. The ferry Queen of the North is reported running aground just south of Sainty Point. Bearing one-zero-one degrees from Port Cummings, Requesting immediate assistance, taking on water, one hundred and one persons onboard. Any vessels in the area able to respond contact Prince Rupert Coast Guard Radio channel one-six or Prince Rupert Traffic, channel one-one. Over.	
00:35:48	2:27:48	Sandra M	PR CG Radio	Prince Rupert Coast Guard Radio, fishing vessel Sandra M.	
		PR CG Radio	Sandra M	Sandra M, Prince Rupert Coast Guard Radio, Go ahead. Over.	
				Yea..(stepped on) (...Prince Rupert Coast Guard)	
00:36:20	2:28:20	Hartley Bay	VTS	This is Hartley Bay, Prince Rupert Traffic, We're trying to get some boats out there.	
00:36:26	2:28:16	VTS	Hartley Bay	Hartley Bay, Prince Rupert Coast Guard Radio, We received a weather report of winds four zero knots, with two meter seas. If you're going to go, request type and number of boats and ETA on scene. Over.	
00:36:31	2:28:31	Hartley Bay	VTS	Roger, Roger	
00:36:40	2:28:40	QON	VTS	Prince Rupert Traffic, Queen of the North	EDN #4
00:36:44	2:28:44	QON	VTS	Traffic did you want me to switch to working Coast	

Time	Tape Counter	From	To	Transcript	Operator
				Guard frequency here?	
00:36:50	2:28:50	VTS	QON	My partners currently working on channel one-six. Doing broadcasts on your behalf. They're trying to raise boats in the area. If you want to stay on channel one-one, you can. If you prefer to go the channel one-six, you can do that as well. Over.	
00:37:04	2:29:04	QON	VTS	I'm gong to go to one-six.	EDN #4
00:37:12	2:29:12	VTS	QON	Roger	
		QON	VTS	Prince Rupert Coast Guard, Queen of the North on channel one-six.	EDN #4

21-22 March, 2006
Queen of the North Audio on VHF Channel 11

Baker Inlet Calling-In-Point until switching to Channel 16

Data File: QON20060221TFCBKR.MP3

Start time: 2006-03-21 22:08 PST
 End time: 2006-03-22 00:37 PST

h:mm:ss	Event	Time(PST)
0:00:00	CIP Baker Inlet	22:08
0:29:25	CIP Pitt Island Light	22:37
1:55:34	CIP Sainty Point	00:04
2:15:40	Reported Aground	00:24
2:28:34	Switch Channels	00:37

Mar. 22. 2006 8:29AM MARINE BRANCH

NO. 4010 P. 2



Document N° - N° du document
8362-09084

INSPECTION CERTIFICATE
for a PASSENGER SHIP TO WHICH THE SAFETY
CONVENTION DOES NOT APPLY
This Certificate shall be supplemented by a Life Raft Register
(SI-70) if applicable

CERTIFICAT D'INSPECTION
concernant UN NAVIRE À PASSAGERS NE
RESSORTISSANT PAS À LA CONVENTION DE SÉCURITÉ
Le présent certificat doit être accompagné d'un Registre de Radeaux
(SI-70) si applicable

Name of Ship Nom du navire	Official License Number Numéro officiel/permis	Port of Registry Port d'immatriculation	Gross Tonnage Jauge brute	Date on which keel laid Date de pose de la quille
MY "QUEEN OF THE NORTH"	38884	VICTORIA	8,869.46	1989

THIS IS TO CERTIFY: - LA PRÉSENTE FAIT FOI:

1. That the above-mentioned ship has been duly inspected in accordance with the provisions of the *Canada Shipping Act*, that the provisions of that Act respecting the inspection of steamships that are applicable to that ship, have been complied with and that the ship is, subject to such limitations as may be specified herein, fit to ply on voyages
Que le navire susvisé a été dûment inspecté conformément à la *Loi sur la marine marchande du Canada*, que les dispositions de ladite Loi relatives à l'inspection des navires à vapeur applicables à ce navire ont été observées et que celui-ci est, sous réserve des limitations pouvant être mentionnées au présent certificat, apte à effectuer des voyages
not beyond - dans les limites HOME TRADE Class - Classe III & II (Restricted)

2. That the number of persons comprising passengers and crew is:
Que le nombre de personnes à bord, passagers et membres d'équipage compris, est le suivant:

Category Catégorie	Number of Passengers Nombre de passagers	Special Passenger Complement Allowance Nombre de passagers accidentaires autorisés	Number of Crew including Master Nombre des membres d'équipage, y compris le capitaine	Total Passengers and Crew Total, passagers et équipage
A	650	0	50	700
B	474	0	40	514
C	288	0	34	322
D	288	0	30	318
E	0	0	23	23
F	0	0	12	12

3. That the ship is marked with subdivision load lines indicated as follows: - Que le navire porte les lignes de charge de compartimentage indiquées ci après:

Subdivision load lines assigned and marked on the ship's sides at amidships Lignes de charge de compartimentage assignées et marquées au milieu de la coque du navire	Freeboard Pavo-bord (mm)	To apply when spaces in which passengers are carried include the following alternative spaces A utiliser quand les espaces occupés par des passagers comprennent les autres espaces suivants
-----	1,125	-----
-----		-----

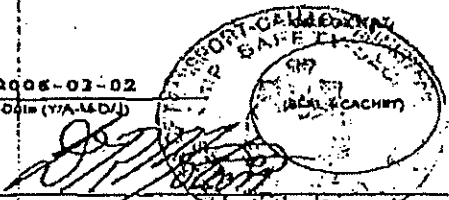
LIMITATIONS ON USE OF CERTIFICATE: - LIMITATIONS DU PRÉSENT CERTIFICAT:

- This certificate shall be valid only for voyages as follows: - Le présent certificat n'est valide que pour les voyages suivants:
HOME-TRADE CLASS III VOYAGES NOT MORE THAN 20 MILES OFFSHORE.
HOME-TRADE CLASS II RESTRICTED VOYAGES AS PER BOARD DECISION NO. 3837 "BETWEEN PRINCE RUPERT AND SKIDEGATE, GRAMAM ISLAND, WITHIN THE WATERS BOUNDED ON THE NORTH BY A LINE BETWEEN ROSE POINT AND DUNDAS ISLAND LIGHT AND BOUNDED ON THE SOUTH BY A LINE BETWEEN SPIT POINT AND BONILLA ISLAND"
- This certificate is valid until 2007-03-01
Le présent certificat est valide jusqu'au 2007-03-01
Date (Y/A-M-D/J)
- The Special Passenger Complement Allowance (see Table, 2 above) is only applicable when the recorded water temperature is 10°C or more.
Le Nombre de passagers accidentaires (voir Tableau, 2 ci-dessus) s'applique seulement lorsque la température de l'eau enregistrée est de 10°C et plus.

This certificate is issued under the authority of the Government of Canada.
Le présent certificat est délivré avec l'autorisation du Gouvernement du Canada.

Issued at - Délivré à VANCOUVER B.C. on - le 2006-03-02
(Place - Endroit) (Date (Y/A-M-D/J))

The undersigned is duly authorized by the Government of Canada to issue this certificate.
Le soussigné est dûment autorisé par le Gouvernement du Canada à délivrer le présent certificat.



Signature of authorized official - Signature de l'agent autorisé

It will be sufficient to indicate the year in which this keel was laid or when the ship was in a similar stage of construction.
Il suffit d'indiquer l'année où la quille a été posée ou celle où la construction du navire se trouvait à un stade équivalent.
* See No. 3, LIMITATIONS ON USE OF CERTIFICATE. - Voir No. 3, LIMITATIONS DU PRÉSENT CERTIFICAT.

Mar. 22. 2006 8:30AM MARINE BRANCH

NO. 4011 P. J

Document N° - N° de document 8662-09084



INSPECTION CERTIFICATE for A PASSENGER SHIP TO WHICH THE SAFETY CONVENTION DOES NOT APPLY

This Certificate shall be supplemented by a Life Rafts Register (31-70) if applicable

CERTIFICAT D'INSPECTION concernant UN NAVIRE A PASSENGERS NE RESORTISSANT PAS A LA CONVENTION DE SECURITE

Le présent Certificat doit être accompagné d'un Registre de Radeaux (31-70) si applicable

THIS IS TO CERTIFY THAT THE INSPECTION SHOWED: - LA PRESENTE FAIT FOI QUE L'INSPECTION A PERMIS DE CONSTATER:

- 1. a) the main propulsion boilers may carry a working pressure not in excess of 0 kPa
b) the vessel service supply and heating boilers may carry a working pressure not in excess of 360 kPa
c) the air receivers may carry a working pressure not in excess of 2,750 kPa
2. The vessel carried: - Que le bâtiment a à son bord:
a) 02 lifeboats, including 02 motor lifeboats, capable of accommodating a total of 114 persons
b) 0 MES (Marine Evacuation System), including 0 DEC (dispositif d'évacuation par glissière) y compris 0
c) 30 inflatable life rafts, including 06 with launching devices, capable of accommodating a total of 750 persons
d) 0 inflatable rescue platforms, capable of accommodating a total of 0 persons
e) 0 rigid life rafts, capable of accommodating a total of 0 persons
f) 0 buoyant apparatus capable of accommodating a total of 0 persons
g) 1 rescue boats capable of accommodating a total of 2 persons
h) 0 emergency boats capable of accommodating a total of 0 persons
i) 21 buoys
j) 0 immersion suits
k) 3 survival craft VHF radio; 36 children life jackets; 953 adult life jackets and 0 suitable boats
3. A Life Rafts Register (31-70) has been issued / n'a pas été délivré

REMARKS: - REMARQUES:



PASSENGER CATEGORY LEVELS "A" "B" AND "C" ONLY 110 BERTHED PASSENGERS ALLOWED ON DECK 06 AND DECK 07.

PASSENGER CATEGORY LEVEL "D" ONLY 10 BERTHED PASSENGERS ALLOWED - ALL ON DECK 07.

CATEGORY "E" SHOWS THE CREW COMPLEMENT FOR RE-POSITIONING/TRANSIT VOYAGES WITHIN HOME-TRADE CLASS II RESTRICTED WATERS.

CATEGORY "F" SHOWS THE CREW COMPLEMENT FOR RE-POSITIONING/TRANSIT VOYAGES WITHIN HOME-TRADE CLASS III WATERS.

NOTE: NO PASSENGERS ONBOARD DURING TRANSIT VOYAGES. CARRIAGE OF MOTOR VEHICLES DURING RE-POSITIONING/TRANSIT VOYAGES LIMITED TO THE TRANSIT CREW AND CONTRACTORS VEHICLES. NO HOT WORK PERMITTED DURING RE-POSITIONING/TRANSIT VOYAGES.

This Certificate is valid only when the crew of the vessel meet the training and certification requirements of the Crewing Regulations, which includes holding a valid MED certificate, or until April 1, 2007, are registered for the required MED training.
NOTES: (1) This certificate is to be posted in a conspicuous place accessible to all persons on board the vessel. (2) Masters, owners, or the authorized representative shall ensure that the vessel is so loaded and ballasted as to secure a proper measure of stability. (3) The Canada Shipping Act provides penalties for overloading. (4) The Canada Shipping Act requires the master, owner, or the authorized representative of a vessel which has sustained damage affecting seaworthiness or efficiency of the vessel to report the matter to the Chairman of the Board of Specialized Inspection as soon as possible. (5) The validity of this certificate shall be contingent on the log book of each inflatable life raft carried being endorsed annually by the manufacturer's accredited servicemen and the servicing of all fire fighting equipment and the replacement of pyrotechnics by prescribed dates.





MARINE SAFETY NOTICE - NOTE DE LA SÉCURITÉ MARITIME

See 'Note to Master' on back - Voir 'Note au Capitaine' au verso

Name of ship Nom du navire	IMO number Numéro OMI	Official number Numéro officiel	Port of registry Port d'immatriculation	Date of d'inspection (yyyy/mm/dd - aaaa/mm/jj)	Place of inspection Lieu de l'inspection
MS. QUEEN OF THE NORTH	6917267	0368854	VICTORIA, B.C.	2006:03:02	TSMUNDSSEN
Item number Numéro d'article	Deficiencies/Remarks Anomalies/remarques	Regulatory reference Référence réglementaire	Date Due Date d'échéance	Date Rectified Date rectifiée (1)	Date Checked Date vérifiée (2)
01.	VESSEL REQUIRES A T.C.M.S. APPROVED LIFEJACKING PLAN. (4 COPIES TO SUBMIT)	L.S.R. PART I SECTION 110.	2006:05:01		
02.	VESSEL REQUIRES TO HAVE AN EVACUATION PLAN/PROCEDURE.	L.S.R. PART I SECTION 111.	2006:05:01.		
03	TURKEY DECK CREW ACCOMMODATION ALLEYS AND ESCAPE ROUTES TO BE CLEARLY MARKED WITH DIRECTIONAL LOW-LEVEL MARKINGS VISIBLE UNDER LOW-LIGHTING CONDITIONS.	L.S.R. PART I SECTION 15 & PART I SECTION 128	2006:07:01		
04.	VESSEL REQUIRES GENERAL ALARMS ON THE EXTERIOR DECK	HULL CON REG PART I SECTION 57 3(1).	SEE NOTE (1) 2006:11:31		
05.	PROVISIONS TO BE MAINTAINED TO MAINTAIN PRESSURE ON THE VESSEL'S FIRE MAIN AT ALL TIMES WHILE PASSENGERS ARE ONBOARD	FIRE DECK CON REG SECTION 32 (4)	SEE NOTE (2) 2006:11:31		
	NOTE 1 & 2. PROVIDER TO CORRECT DEFICIENCY REQUIRED FROM B.C.F.S. INC WITHIN (60 DAYS)				
06.	DRAWINGS (MECHANICAL & ELECTRICAL) TO BE SUBMITTED FOR APPROVAL FOR THE 2 HOT WATER BOILERS. (SUBMIT TO TCMS TECHNICAL SERVICES)	MECHANICAL REGS SCHEDULE 7 PART II TP. 127 SEC. 36.2	2006:04:01		

PARTICULARS: PARTICULARITÉS

District office address: / Adresse du bureau de district: #620-800 BOWEN STREET, VANCOUVER V6Z 2S8 BC Telephone / Téléphone - Telefax / Télécopieur - E-mail / Courriel: 604 (666 0445) (666 1911) MOTOND@TC.GC.CA.

David R. Moton (DAVID R. MOTON)

2006-03-02
Date (yyyy/mm/dd - aaaa/mm/jj)

Signature of duly authorized Inspector - Signature de l'inspecteur dûment autorisé

D.J. Frandsen (D.J. FRANSEN)
PRINT NAME - NOM EN LETTRES MOULÉES
Signature of authorized Representative - Signature de l'agent autorisé

2006-03-02
Date (yyyy/mm/dd - aaaa/mm/jj)

White/Blanche: Master/Capitaine Yellow/Jaune: File/Dossier Pink/Rose: Inspector/Inspecteur





MARINE SAFETY NOTICE - NOTE DE LA SÉCURITÉ MARITIME

See 'Note to Master' on back - Voir 'Note au Capitaine' au verso

Name of ship Nom du navire	IMO number Numéro OMI	Official number Numéro officiel	Port of registry Port d'immatriculation	Date of inspection (yyyy/mm/dd - aaaa/mm/jj)	Place of inspection Lieu de l'inspection
MV. "QUEEN OF THE NORTH"	6917267	0368854	VICTORIA B.C.	2006:03:02	TSEAWASSEN
Item number Numéro d'article	Deficiencies/Remarks Anomalies/remarques	Regulatory reference Référence réglementaire	Date Due - d'échéance	Date Rectified - rectifiée (1)	Date Checked - vérifiée (2)
06.	FOUR (4) COPIES TO SUBMIT.				
07.	MEANS TO BE PROVIDED ON THE WEATHER DECK FOR STOPPING PUMPS USED TO DISCHARGE OIL RESIDUES AND SLUDGE	OK POLLUTION PREVENTION REGULATIONS PART I - Sec 2006-05:01 H.1.			
08.	FIRE DOORS TO HAVE SENSIBLE (INDIVIDUAL) "CLOSED" INDICATION. (NUMBER OF DOORS PRESENTLY PAIRED FOR "CLOSED" INDICATION)	TP 127 SECTION 21.7 (G)	2006:11:31		
09.	FIRE DOORS 217 & 223 TO HAVE LOCAL CONTROL SWITCH RE-LOCATED TO A POSITION ADJACENT TO THE DOORS	TP 127 SECTION 21.7 (K)	2006:11:31		
10.	M.C.D + PLATFORM CAR DECK FIRE DOORS TO BE FITTED WITH LOCAL RELEASE BUTTONS ON BOTH SIDES (PRESENTLY FITTED ON CAR DECK SIDE ONLY)	TP 127 SECTION 21.7 (K)	2006:11:31		
11.	P.A/GA INTERLOCK TO BE FITTED. PA TO AUTOMATICALLY STOP G.A WHEN RISING ANNOUNCEMENT. G.A TO AUTOMATICALLY RESUME	TP 127 SECTION 21.4.2 (C)	2006:04:01		
12.	TRANSITION MOUNTING REQUIRED IN WAY OF RESCUE BOAT DAVIT HEAD FLOORING.	TP 127 SECTIONS 51.24(iii) & 12.5(ji)	2006:04:01		
PARTICULARS / PARTICULARITÉS					
District office address: Adresse du bureau de district:			Telephone / Téléphone - Telefax / Télécopieur - E-mail / Courriel		

David R. Noton
DAVID R. NOTON

PRINT NAME - NOM EN LETTRES MOULÉES

Signature of duly authorized Inspector - Signature de l'inspecteur dûment autorisé

J. J. Frandsen
J. J. FRANSEN

PRINT NAME - NOM EN LETTRES MOULÉES

Signature of authorized Representative - Signature de l'agent autorisé

2006-03-02
Date (yyyy/mm/dd - aaaa/mm/jj)

2006-03-02
Date (yyyy/mm/dd - aaaa/mm/jj)

White/Blanche: Master/Capitaine Yellow/Jaune: File/Dossier Pink/Rose: Inspector/Inspecteur



MARINE SAFETY NOTICE - NOTE DE LA SÉCURITÉ MARITIME

See 'Note to Master' on back - Voir 'Note au Capitaine' au verso

Name of ship Nom du navire		IMO number Numéro OMI	Official number Numéro officiel	Port of registry Port d'immatriculation	Date of inspection (yyyy/mm/dd - aaaa/mm/jj)	Place of inspection Lieu de l'inspection
MV. Queen of the North		6919267	0368854	VICTORIA BC.	2006-03-02	FRANCOISEN
Item number Numéro d'article	Deficiencies/Remarks Anomalies/remarques	Regulatory reference Référence réglementaire	Date Due Date d'échéance	Date Rectified Date rectifiée (1)	Date Checked Date vérifiée (2)	
13.	EMERGENCY LIGHTING REQUIRED IN ADDITIONAL SPORES AS PER LIST CONTINUED 2006:03:1.	TP. 127 51.2.2 (6)	2006:05:01			

PARTICULARS - PARTICULARITES

District office address: Adresse du bureau de district: Telephone / Téléphone - Telefax / Télécopieur - E-mail / Courriel

[Signature]
 PRINT NAME - NOM EN LETTRES MOULÉES
 Signature of duly authorized Inspector - Signature de l'inspecteur dûment autorisé
[Signature] (D. FRANDSEN)
 PRINT NAME - NOM EN LETTRES MOULÉES
 Signature of authorized Representative - Signature de l'agent autorisé

2006-03-02
 Date (yyyy/mm/dd - aaaa/mm/jj)
 2006-03-02
 Date (yyyy/mm/dd - aaaa/mm/jj)

White/Blanche: Master/Capitaine Yellow/Jaune: File/Dossier Pink/Rose: Inspector/Inspecteur

ATTACHMENT 20(c)

Queen of the North
SI-07 #06(TMJ502) – DRM01
Status Report as at March 22, 2006

SI-07 #	SI-07 Item	Response
01	Vessel requires a TCMS approved lifesaving plan (4 copies to submit)	<p>Due Date May 1/2006</p> <p>All BCF vessels have lifesaving plans, including the Queen of the North. TCMS requested some revisions to the existing lifesaving plan during the 2006 Queen of the North refit.</p> <p>BC Ferries had submitted 4 copies of the revised lifesaving plan. BCF was still awaiting TCMS approval on the revisions.</p> <p>The previous lifesaving plan was onboard the ship with revisions noted.</p> <p>The revisions to the drawings included:</p> <ul style="list-style-type: none"> • Changes to the legend nomenclature • Addition of symbols in legend • Change of color of some symbols • Increase in size of some symbols • Addition of symbol to drawing including equipment locations • Addition of ship “particulars” to drawing • Revision of title block to new corporate identity.
02	Vessel requires to have an evacuation plan/procedure	<p>Due Date May 1/2006</p> <p>The existing Evacuation Plan was contained in the Muster List. This plan remains in force until the new plan was approved by TCMS. Before the incident BCF had implemented a new company-wide template for evacuation plans. The ship’s staff was working to adapt this template to the vessel.</p> <p>A detailed evacuation analysis for the Queen of the North was completed in January 30, 2004. The evacuation plan is prepared from this analysis. A draft version of the evacuation plan was completed.</p> <p>This draft revision was being reviewed and was close to finalization.</p>

03	'Tween deck crew accommodation alleyways and escape routes to be clearly marked with directional low level markings visible under low lighting conditions	Due Date April 1/2006 Photo luminescent trackway tape installation was underway with ships staff.
04	Vessel requires general alarms on the exterior decks	Due Date November 31/2006 Planned for refit within due date.
05	Provisions to be made to maintain pressure on the vessels fire main at all times whilst passengers are on board.	Due date November 31/2006 Planned for refit within due date.
06	Drawings (mechanical and electrical) to be submitted for approval for the two hot water boilers. Submit to TCMS Technical Section. Four copies to submit	Due date April 1/2006 Not submitted at time of incident. BCF was in continuous discussions with Transport Canada on this technical issue and both parties were working on a resolution at time of the incident.
07	Means to be provided on the weather deck for stopping pumps used to discharge oily residues and sludge	Due date May 1, 2006 Complete at time of incident.

08	Fire doors to have separate (individual) "closed" indication. (Number of doors presently paired for closed indication.)	Due date November 31, 2006 Planned for refit within due date.
09	Fire Doors 217 and 223 to have local control switch relocated to a position adjacent to the doors	Due date November 31,2006 Complete at time of incident
10	Main cardeck and platform car deck fire doors to be fitted with local release buttons on both sides (presently fitted on car deck side only)	Due date November 31, 2006 Planned for refit within due date.
11	PA/GA interface to be fitted. PA to automatically stop GA when making announcements. GA to automatically resume.	Due date April 1, 2006 Complete at time of incident
12	Transition lighting required in way of rescue boat davit head floodlight.	Due date April 1, 2006 Complete at time of incident
13	Emergency lighting required in additional spaces as per list compiled 2006-03-01	Due date May 1, 2006 Complete at time of incident

ATTACHMENT 21

REPORT OF A MARINE OCCURRENCE (TSB 1808)

PART 3 - PARTICULARS OF A REPORTABLE ACCIDENT OR INCIDENT (Required for all occurrences)

Date of Occurrence March 22, 2006		Location (Geographical name of body of water, waterway or harbour) Wright Sound	
Time of Occurrence (Approx.) APPROX. 00:25		UTC <input type="checkbox"/> Local <input checked="" type="checkbox"/>	Latitude 63 19.19 minutes N Longitude 129 14.298 minutes W (approx)
Reportable Accident <input type="checkbox"/> Collision between ships <input type="checkbox"/> Striking another object <input type="checkbox"/> Sustains damage that affects its seaworthiness or renders it unfit for its purpose <input type="checkbox"/> Explosion <input type="checkbox"/> Foundering <input type="checkbox"/> Missing <input type="checkbox"/> Vessel abandoned <input type="checkbox"/> Other (Specify) _____ <input type="checkbox"/> Fire <input type="checkbox"/> Grounding <input checked="" type="checkbox"/> Sinking <input type="checkbox"/> Capsizing		Reportable Incident <input type="checkbox"/> A person falls overboard - not requiring admission to hospital <input type="checkbox"/> Cargo shift <input type="checkbox"/> Involuntary bottom contact without grounding <input type="checkbox"/> Crew member physical incapacitation, that poses a threat to the safety of any person, property or the environment <input type="checkbox"/> Fencing of any utility cable, pipe or underwater pipeline <input type="checkbox"/> Loss of cargo overboard <input type="checkbox"/> Intentional anchoring or grounding or bracing to avoid an accident <input type="checkbox"/> Release of dangerous goods (On board / from the ship) <input type="checkbox"/> Risk of collision <input type="checkbox"/> Threat to the safety of any person, property or the environment due to the total failure of <input type="checkbox"/> navigation equipment, or <input type="checkbox"/> the Main or Auxiliary Power Generation or <input type="checkbox"/> the Propulsion or Steering Machinery <input type="checkbox"/> Any other dangerous situation which could have resulted in an accident (Specify) _____	
A person is killed or sustains a serious injury (Requiring admission to hospital) as a result of <input type="checkbox"/> Falling overboard <input type="checkbox"/> Coming into contact with any part of the ship or its contents <input type="checkbox"/> Boarding or being on board <input type="checkbox"/> Other (Specify) _____ Suspected that 2 passengers did not leave vessel as it sank.			
Weather Conditions <input type="checkbox"/> Clear <input type="checkbox"/> Fog <input checked="" type="checkbox"/> Overcast - some rain <input type="checkbox"/> Other (Specify) _____ Visibility _____ Restricted _____ <input type="checkbox"/> Mist <input type="checkbox"/> Other _____ Account of rescue services rendered (By what ship and means) Rescue by Coast Guard vessel Sir Wilfred Laurier Rescue by numerous fishing vessels from Hartley Bay		Sea Conditions Sea State MINIMAL Swell (Direction, Height) MINIMAL Was vessel icing present? Yes <input type="checkbox"/> No <input checked="" type="checkbox"/> Was sea ice present? Yes <input type="checkbox"/> No <input checked="" type="checkbox"/> Approximate Thickness _____ %	
Wind Direction variable Speed (Knots) variable Temperature _____ Air _____ °C / _____ °F Sea _____ °C / _____ °F		Other (Specify) _____	

PART 4 - OCCURRENCE VESSEL (Required for all occurrences)

Last Vessel Inspection(s) Certificate(s) Place Vancouver		Number of Persons on Board Crew 42		Number of Casualties Missing Persons 2				
Issued By David R. Motion		Passengers 59		Minor Injuries VERY LITTLE				
Issue Date 2006-09-02		Guests		Serious Injuries (An injury that is likely to require admission to hospital)				
Expiry Date 2007-09-01		Others		Deaths				
ISM Safety Management Certificate VCR0400315								
List of Victims (In case of fatalities or injured) If more space is required, please use a separate sheet.								
Surname	Given Name	Nationality	Date of Birth	Sex	Rank or Status on Board	Activity at Time of Occurrence	Type of Injury	Years of Experience in Occupation
Folsy	Gerald	Canadian	1962	M	Passenger	unknown	missing presumed dead	N/A
Rosette	Shirley	Canadian	1983	F	Passenger	unknown	missing presumed dead	N/A

ATTACHMENT 21

REPORT OF A MARINE OCCURRENCE (TSB 1808)

Present Voyage			
Last Sailed From Prince Rupert, B.C.		Destination Port Hardy, B.C.	
Date March 21, 2008		Drafts (At time of the occurrence) Approx. 5.00	
Time 20:00		Fwd. <input type="checkbox"/> Aft <input checked="" type="checkbox"/>	Mains <input checked="" type="checkbox"/> Feet <input type="checkbox"/>
Description of Cargo / Ballast N/A	Total Weight	Geographical location of where ballast was loaded	
Nature of operation at time of occurrence (Fishing, transit, international trade, domestic trade, excursion, etc.) Passenger Ferry			
Ice Advisor/Navigator On Board <input type="checkbox"/> Yes <input checked="" type="checkbox"/> No <input type="checkbox"/>	Unmanned Machinery Space (UMS) <input type="checkbox"/> Yes <input checked="" type="checkbox"/> No <input type="checkbox"/>	One Man Bridge <input type="checkbox"/> Yes <input checked="" type="checkbox"/> No <input type="checkbox"/>	Integrated Bridge System <input type="checkbox"/> Yes <input checked="" type="checkbox"/> No <input type="checkbox"/>
List of life saving appliances and/or safety equipment used (Life rafts, fire-fighting gear, pumps, etc.) Life rafts Life boats Life vests EPIRB Flares		Number of persons evacuated 99 accounted for. 2 missing	
Public Address System Radios Watertight Flashlight Bilge Pumps McGregor Doors			

PART 5 - PERSONNEL (Required for all occurrences)

Personnel	Master or Person in Charge On Duty: Yes <input type="checkbox"/> No <input checked="" type="checkbox"/>	Officer of the Watch	Engineer of the Watch	Pilot	Pilot on Board Yes <input type="checkbox"/> No <input checked="" type="checkbox"/>
Surname					
Given Name					
Certificate Number	12524S	61944B	17492X	License Number	
Grade of Certificate	Master of a home-track steamship**	First mate, intermediate voyage	1st Class Eng. motorship (1R)	Grade of License	
Date of Initial Issue	2003-02-11	2001-11-23	1992-01-20	Date of Issue	
Date of latest continued proficiency endorsement			2001-10-23	Licensed By	
Place of Issue	Ottawa	Ottawa	Ottawa	Other Pilot on Board Name	Yes <input type="checkbox"/> No <input checked="" type="checkbox"/>
Exception	Yes <input type="checkbox"/> No <input checked="" type="checkbox"/>	Yes <input type="checkbox"/> No <input checked="" type="checkbox"/>	Yes <input type="checkbox"/> No <input checked="" type="checkbox"/>		
Duty schedule on the day of the occurrence	No set watch	18:00 - 06:00	18:00 - 06:00		
Hours awake before the occurrence					
Total hours of sleep in the last 24 hours					
Total duration of last sleep period					

** First Mate of a foreign going vessel

ATTACHMENT 21

REPORT OF A MARINE OCCURRENCE (TSB 1808)

PART 6 - DESCRIPTION OF MARINE OCCURRENCE (Required for all occurrences)

This information will be reviewed and analyzed by the Transportation Safety Board (TSB) and Transport Canada to assist them in meeting their respective mandates directed at the safe operation of ships. Events and circumstances leading to the marine occurrence should be described as well as any corrective action taken to reduce the risk of a similar occurrence happening in the future. If more space is required please use separate sheet.

At approximately 00:25 hrs. on March 22, 2006 vessel grounded on Gil Island, 1/2 mile northwest of Juan Point, drifted off, then sank.

PART 7 - NAVIGATIONAL AIDS (Not required for occupational occurrences) See attached schedule. Use under investigation.
 Check "Y" if on board and "Z" if used at the time of the occurrence

Y		Z		Y		Z		Y		Z	
Radar 1	<input type="checkbox"/>	<input type="checkbox"/>	LRANC	<input type="checkbox"/>	<input type="checkbox"/>	R/T AM	<input type="checkbox"/>	<input type="checkbox"/>	Gyro Compass	<input type="checkbox"/>	<input type="checkbox"/>
Radar 2	<input type="checkbox"/>	<input type="checkbox"/>	SATNAV	<input type="checkbox"/>	<input type="checkbox"/>	R/T MF	<input type="checkbox"/>	<input type="checkbox"/>	Magnetic Compass	<input type="checkbox"/>	<input type="checkbox"/>
ARPA	<input type="checkbox"/>	<input type="checkbox"/>	GPS/DGPS	<input type="checkbox"/>	<input type="checkbox"/>	R/T VHF	<input type="checkbox"/>	<input type="checkbox"/>	Auto Pilot	<input type="checkbox"/>	<input type="checkbox"/>
GMDSS	<input type="checkbox"/>	<input type="checkbox"/>	SCS/BCDS	<input type="checkbox"/>	<input type="checkbox"/>	SATCOM	<input type="checkbox"/>	<input type="checkbox"/>	Direction Finder	<input type="checkbox"/>	<input type="checkbox"/>
Course Recorder	<input type="checkbox"/>	<input type="checkbox"/>	AS	<input type="checkbox"/>	<input type="checkbox"/>	CB	<input type="checkbox"/>	<input type="checkbox"/>	Echo Sounder	<input type="checkbox"/>	<input type="checkbox"/>
Other		<input type="checkbox"/> <input type="checkbox"/> Specify		Voyage Data Recorder on Board Yes <input type="checkbox"/> No <input checked="" type="checkbox"/>							

PART 8 - DAMAGE (in case of damage to property)

Vessel Damage	Damage to Other Vessel(s) / Other Object(s)
<input checked="" type="checkbox"/> Total Loss <input type="checkbox"/> Constructive Total Loss <input type="checkbox"/> Partial Loss Description of Damage Vessel and contents lost	Give brief description of damage to Other Objects Other Vessels Cargo, Stern Installation, etc.
State value of damage/total loss if known \$ _____	State value of damage/total loss if known \$ _____

PART 9 - POLLUTANTS AND DANGEROUS GOODS (In case of spilling, actual or potential release of pollutants or dangerous goods) If more space is required please use separate sheet.

Fuel / Products on Board		Fuel / Products Released							
Proper Shipping Name	Quantity	Quantity Released	IMO Class	UN Number	From		Outcome		
					Boilers	Cargo	Contained	Dispensed	Caught Fire
Diesel	220,000	unknown		1202	<input checked="" type="checkbox"/>	<input type="checkbox"/>	<input checked="" type="checkbox"/>	<input checked="" type="checkbox"/>	<input type="checkbox"/>
					<input type="checkbox"/>	<input type="checkbox"/>	<input type="checkbox"/>	<input type="checkbox"/>	<input type="checkbox"/>
					<input type="checkbox"/>	<input type="checkbox"/>	<input type="checkbox"/>	<input type="checkbox"/>	<input type="checkbox"/>

Specify units used: Imperial Gallons U.S. Gallons Litres Barrels Metric Tons
 British Tons (Long Tons) U.S. Tons (Short Tons) Other (Specify) _____

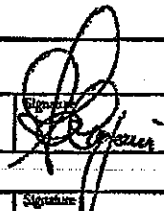
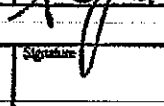
ATTACHMENT 21

REPORT OF A MARINE OCCURRENCE (TSB 1808)

PART I - VESSEL(S) UNDER TOW/BARGES
 (This section may be used to report data for tows/barges potentially or actually causing or sustaining damage in the occurrence described above.)

Vessel Particulars	Tow #1	Tow #2	Tow #3
Name			
Official Number			
Port of Registry			
Type of Vessel			
Gross Tonnage			
Length	Metres <input type="checkbox"/> Feet <input type="checkbox"/>	Metres <input type="checkbox"/> Feet <input type="checkbox"/>	Metres <input type="checkbox"/> Feet <input type="checkbox"/>
Breadth	Metres <input type="checkbox"/> Feet <input type="checkbox"/>	Metres <input type="checkbox"/> Feet <input type="checkbox"/>	Metres <input type="checkbox"/> Feet <input type="checkbox"/>
Year Built			
Hull Material			
Hull Construction	Single Skin <input type="checkbox"/> Double Hulled <input type="checkbox"/>	Single Skin <input type="checkbox"/> Double Hulled <input type="checkbox"/>	Single Skin <input type="checkbox"/> Double Hulled <input type="checkbox"/>
Discharge	Fwd <input type="checkbox"/> Aft <input type="checkbox"/>	Fwd <input type="checkbox"/> Aft <input type="checkbox"/>	Fwd <input type="checkbox"/> Aft <input type="checkbox"/>
Ice Class			
Description and Location of Cargo			
Weight of Cargo			
Extent and Location of Damage			
Length of Towline	Metres <input type="checkbox"/> Feet <input type="checkbox"/>	Metres <input type="checkbox"/> Feet <input type="checkbox"/>	Metres <input type="checkbox"/> Feet <input type="checkbox"/>

PART II - ADDITIONAL INFORMATION RELATED TO PERSONAL INJURY / HAZARDOUS OCCURRENCE, REQUIRED BY THE CANADA LABOUR CODE PART II

Type of Occurrence <input type="checkbox"/> Death (suspected) <input type="checkbox"/> Disabling Injury <input type="checkbox"/> Emergency Procedure <input type="checkbox"/> Fire/Explosion <input checked="" type="checkbox"/> Other (Specify) - various minor injuries	
Witnesses	Supervisor's Name
Site of Hazardous Occurrence	Direct Cause of Hazardous Occurrence
Specify training in accident prevention given to injured employee in relation to duties performed at the time of the hazardous occurrence	
Regular drills and training	
Corrective measure and date employer will implement	
Under investigation	
Supplementary Corrective Measures	
Under investigation	
Name of person investigating	Date
	18 JULY 2006
Title	Telephone
VP Fleet Operations	250-978-1378
Name of safety committee member or safety and health representative	Date
	
Title	Telephone

ATTACHMENT 21

REPORT OF A MARINE OCCURRENCE (TSB 1808)

QUEEN OF THE NORTH

Reference Number: 1051

Radar:
ARPA (2001) Racal Decca 340E, X-Band, 25 Kw, CRT,
(2006) Sperry 340 "E" Series S-Band, TFT ARPA
Racal/Decca Bridgemaster C251/6

Radio VHF: Sailor RT 4822 DCS Marine VHF (2002)
Sailor RT 146
Skantli 3000

Radio FM: Marcom 5

Gyro Compass: Anschutz Standard 22

Sounder: Marconi Sea Chart with Digital Remote

Auto Pilot: Anschutz Nautopilot "D" Compilot 8

Doppler: Sperry 331

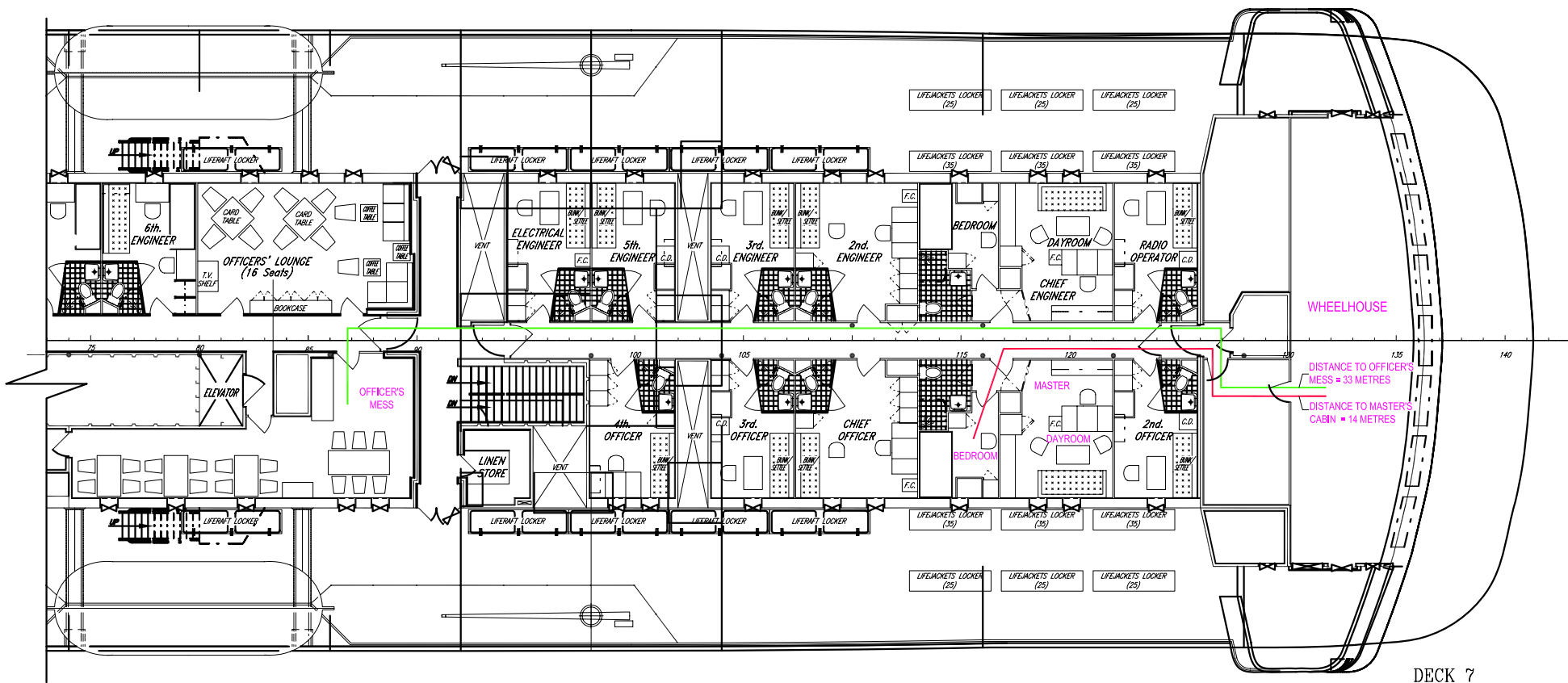
Draft IND: Weir-Jones

Nav. System: DGPS - Northstar 941XD

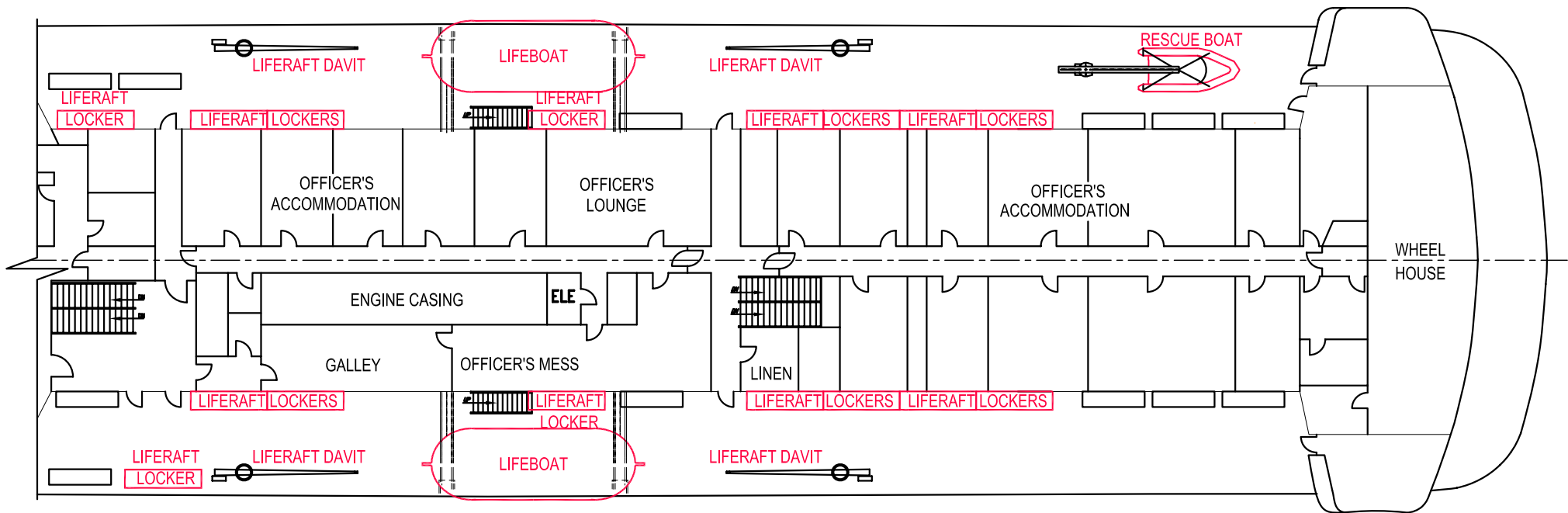
Navtex: Alden AE-900

ECDIS:
(2006) TRANSAS NaviSailor 3000 Desktop Model

AIS Transponder: Sperry/SAAB R-4 (2005)



PLAN VIEW INDICATING DISTANCES FROM:
 OFFICER'S MESS TO WHEELHOUSE ————
 MASTER'S CABIN TO WHEELHOUSE ————



DECK 7

PLAN VIEW INDICATING LIFERAFT, RESCUE BOAT AND LIFEBOAT LOCATIONS

**ATTACHMENT 25
DISTANCE ANALYSIS
GROUNDING ALONG GIL ISLAND**

Impact Sites

53° 19.191' N
129° 14.296' W

to

53° 19.128' N
129° 13.995' W

Distance Analysis

If the D. Long is 0.301'

If the D.Lat is 0.063'

Then, using the following plane sailing formulae;

Departure = D. Long x Cos mean Lat

And

Distance = sq. root of (Dep² + D.Lat²)

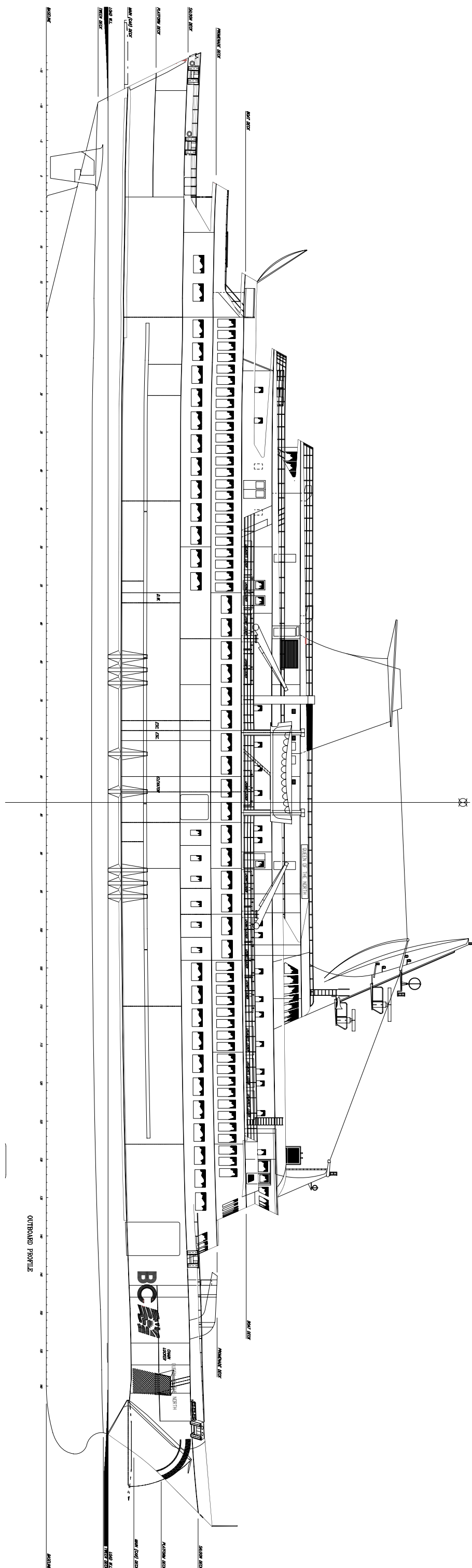
Dep = 0.301' x Cos 53 deg 19 mins

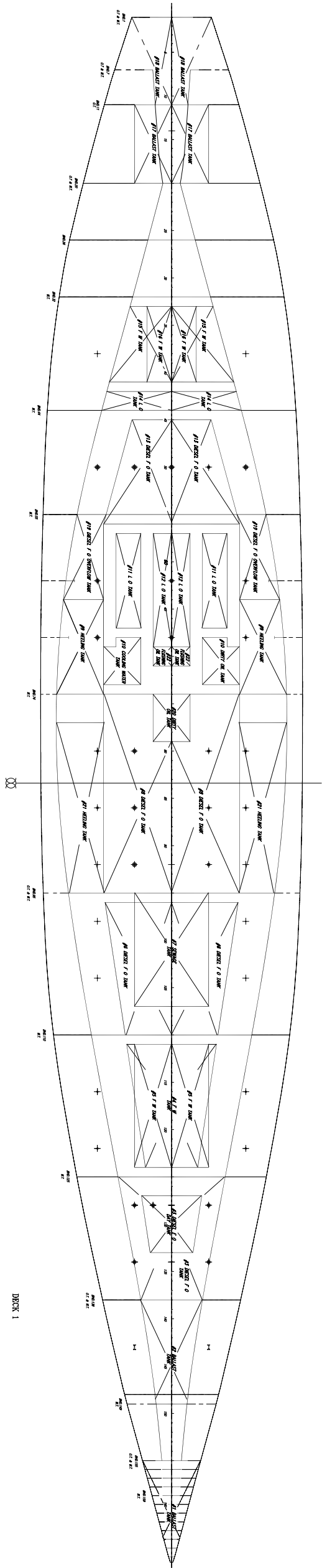
Dep = 0.17981496

Dist = Sq.rt(sq0.17981496 + sq0.063)

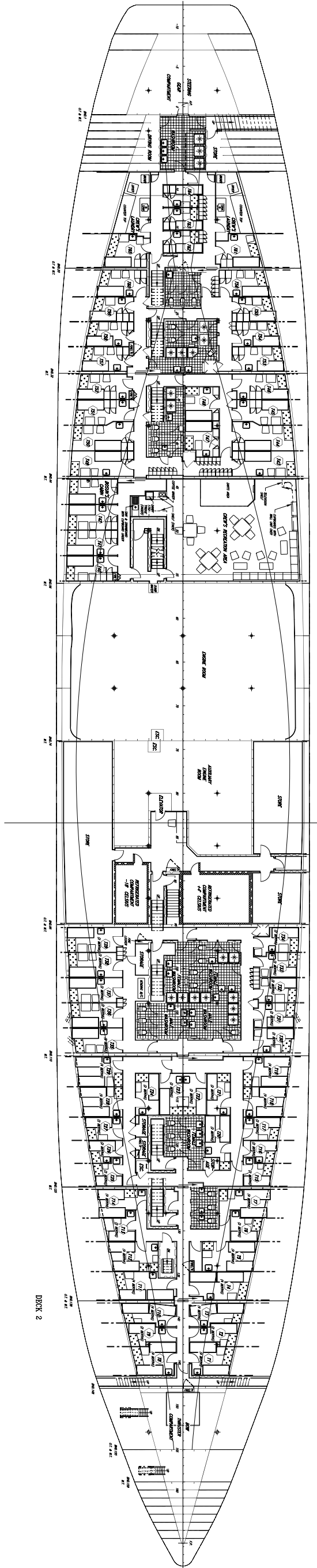
Dist = 0.1905'

= 1158 feet.

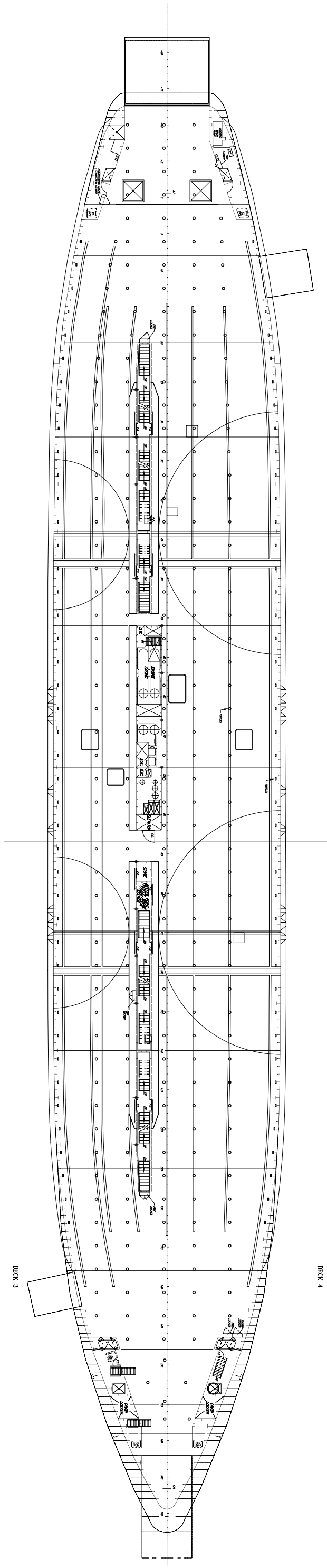


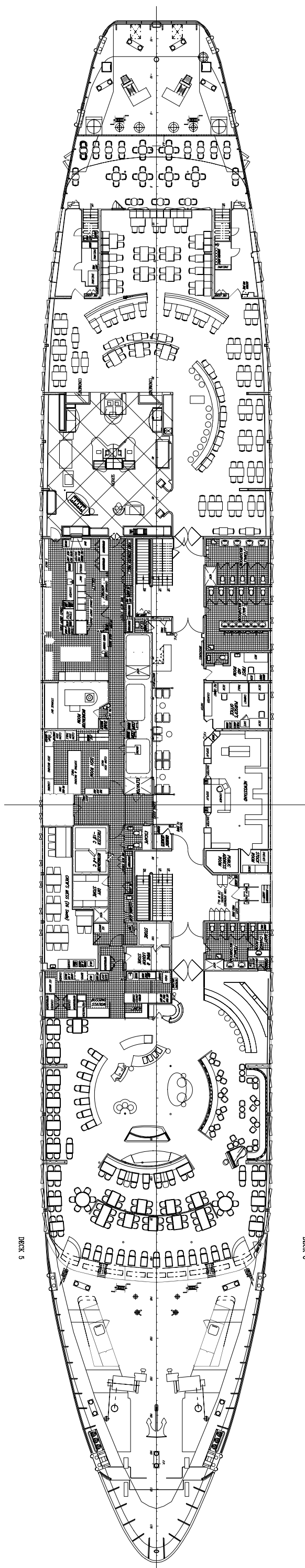


DECK 1



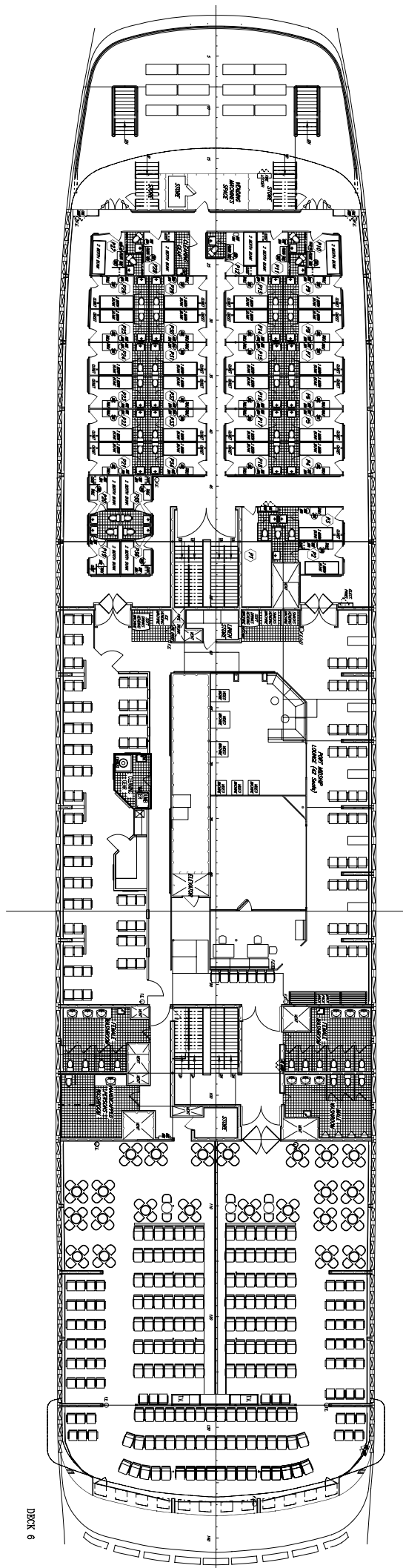
DECK 2





DECK 5

DECK 6



DECK 6

